

71184

Vol. 779 Page 17574

AN ORDINANCE VACATING THE DEDICATED UTILITIES
EASEMENT IN BLOCK 3 OF THE RESUBDIVISION OF A
PORTION OF McLOUGHLIN HEIGHTS ADDITION.

WHEREAS, on June 18, 1979, the Common Council held a public hearing on a proposal to vacate the utilities easement in Block 3 of the Resubdivision of a Portion of McLoughlin Heights Addition; and

WHEREAS, the City Planning Commission, pursuant to public hearing, did recommend the Common Council grant the proposed vacation; and

WHEREAS, all adjoining property owners have consented to said vacation proposal; and

WHEREAS, all utilities are presently located in street rights-of-way or specific utility easements which have been obtained by the City; and

WHEREAS, the Common Council has determined it is in the best interest of the City that said easement be vacated; NOW, THEREFORE,

THE CITY OF KLAMATH FALLS, OREGON, ORDAINS AS FOLLOWS:

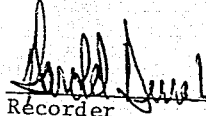
The 20-foot wide utilities easement located in Block 3, Resubdivision of a Portion of McLoughlin Heights Addition as shown on the official plat thereof on file in the office of the County Clerk for Klamath County, Oregon and according to the map attached hereto, and incorporated herein as Exhibit "A" is hereby vacated.

Passed by the Common Council of the City of Klamath Falls, Oregon, this
2nd day of July, 1979.

Presented to the Mayor and by him approved this 2nd day of July, 1979.


Mayor

ATTEST:


Recorder

STATE OF OREGON,)
County of Klamath,) SS
City of Klamath Falls.)

I, HAROLD DERRAH, Recorder of the City of Klamath Falls, Oregon, do hereby certify that the above and foregoing is a true and correct copy of the whole of an Ordinance duly adopted by the Common Council of the City of Klamath Falls on the 2nd day of July, 1979, and thereafter approved and signed by the Mayor and attested by the Recorder.


City Recorder

After recording, return to the City of Klamath Falls, P. O. Box 237,
Klamath Falls, Oregon 97601

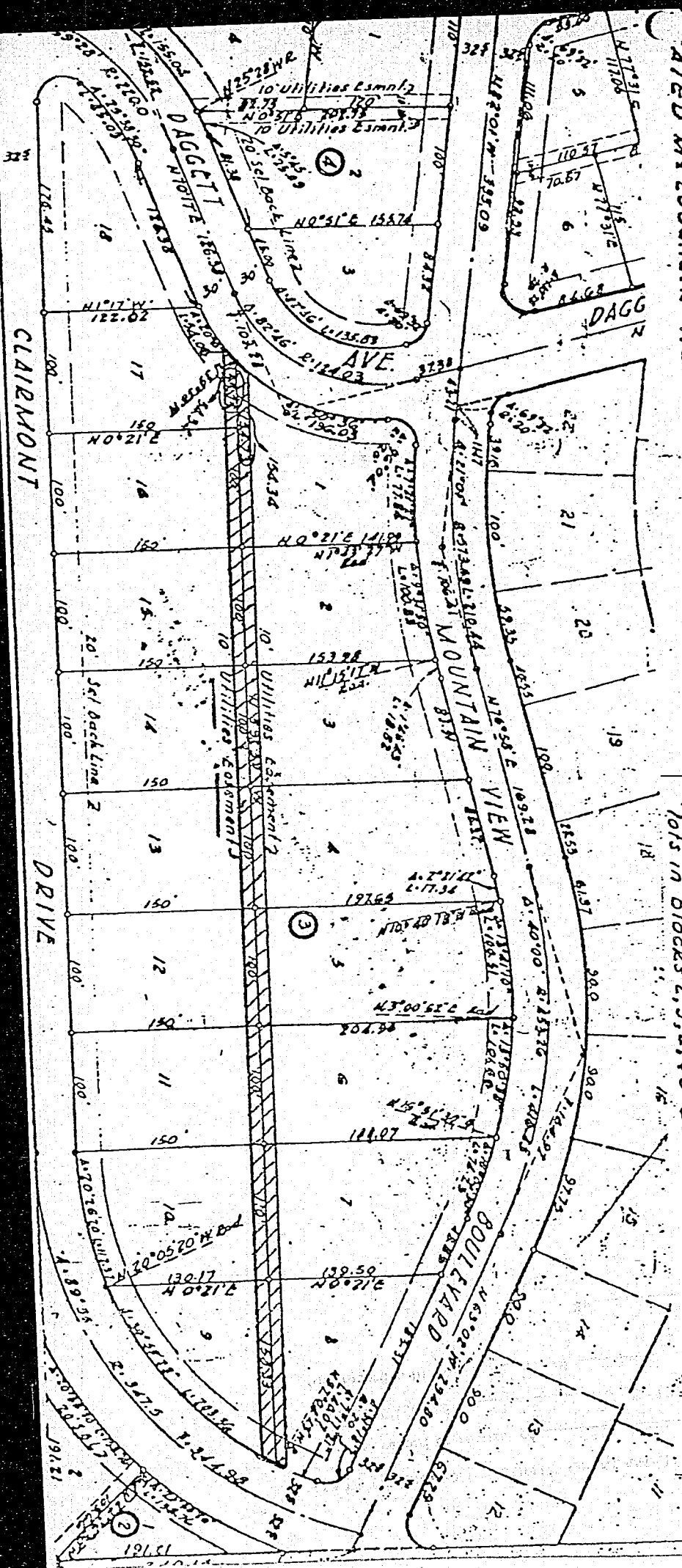
979 JUL 24 PM 4 04

17575

RESUBDIVISION
OF A PORTION OF
MCLOUGHLIN HEIGHTS
SITUATED IN THE SW 1/4 OF SECTION 20 T38S, R9E, W4E,
CLATSOP COUNTY, OREGON BEING A PORTION OF
DATED MCLOUGHLIN HEIGHTS PLAT.

DEDICATION
STATE OF OREGON
COUNTY OF CLATSOP

This is to certify that Clatsop County Title Co., Inc. is a corporation duly organized and existing under the laws of the State of Oregon and is the owner, as trustee for former owners, of land described in the annexed plat, said plat being subject to a twenty foot utilities easement the centerline of which is the rear lot lines of all lots in Blocks 2, 3, 4, 4.5 as shown on the annexed plat.



STATE OF OREGON; COUNTY OF KLAMATH; ss.

Filed for record at request of City of Klamath Fallsthis 24th day of July A. D. 1979 at 4:00 clock^P M., andfully recorded in Vol. 170, of Deeds on Page 17574

Wm D. MILNE, County Clerk

By Bernice A. Whitech

Fee \$9.00