

Department of Commerce Corporation Division

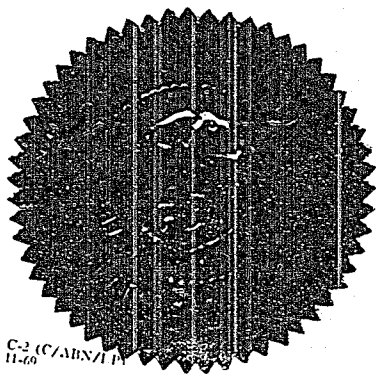
I, Frank J. Healy, Corporation Commissioner and Custodian of the Seal of the Corporation Division of the State of Oregon, DO HEREBY CERTIFY:

That KLAMATH BASIN IMPROVEMENT DISTRICT, a corporation organized under and by virtue of the laws of the State of Oregon, has on this 16th day of April, 1982, filed in the office of the Corporation Commissioner of the State of Oregon Amended Articles of Incorporation decreasing the number of acres of land embraced in the district to 11,288.08.

In Testimony Whereof, I have hereunto set my hand and affixed hereto the seal of the Corporation Division of the Department of Commerce of the State of Oregon this 16th day of April, 1982.

Frank J. Healy
Corporation Commissioner

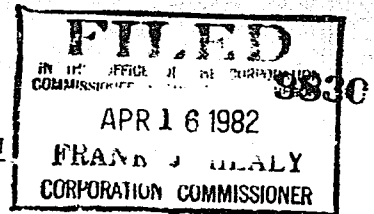
By Sherley Muto
Chief Clerk



82 AUG 2 PM 1 04

del
16

AMENDED ARTICLES OF INCORPORATION



Pursuant to the provisions of Chapter 554 O.R.S., the undersigned District Improvement Company adopts the following Amended Articles of Incorporation to exclude lands as hereinafter set forth.

FIRST: The name of the Corporation is KLAMATH BASIN IMPROVEMENT DISTRICT.

SECOND: Paragraph III of the original Articles of Incorporation as amended is amended by the exclusion of the lands hereinafter described in Exhibit "A" attached hereto and made a part hereof by reference.

Said excluded lands shall not, (a) be relieved from any lien existing at the time of the exclusion, (b) affect the date of priority of any lien of the corporation, and (c) relieve any landowner from any obligation to pay any valid outstanding bonds or indebtedness of the Corporation. The excluded lands shall continue to be subject to the lien and chargeable with all obligations outstanding at the time of the exclusion.

THIRD: The date of the approval of the exclusion of the above described lands by the members was on April 13, 1982.

The total acres are 11288.08.

KLAMATH BASIN IMPROVEMENT DISTRICT,

By: J. Randall Pope President

By: Neva H. Shogren Secretary

STATE OF OREGON]
] ss.
County of Klamath]

I, GEORGE H. PROCTOR, a Notary Public for Oregon, hereby certify that on the 13th day of April, 1982, personally appeared before me L. RANDALL POPE, who being by me first duly sworn, declared that he is the President of KLAMATH BASIN IMPROVEMENT DISTRICT and that he signed the foregoing document as President of said Corporation and that the statements therein contained are true.

George H. Proctor
Notary Public for Oregon

My Comm. expires: 9-17-82

EXHIBIT "A"

CHEYNE, Robert E.
CHEYNE, Helen J.
OWENS, J. Bruce
OWENS, E. Marie

Code 52 - 3910 - 1700
Por SESW SWSW Section 5, T. 39 S., R. 10 E., W.M.

Total Acres 36
Excluded Acres 36

Date Filed: November 5, 1980.

W. F. and GLADYS DEAN

Code 163, map 3910-640, Tax Lot 200

Por. S $\frac{1}{2}$ SE $\frac{1}{4}$ SE $\frac{1}{4}$ below ditch, Section 6, Township 39 S.
R. 10 E., W.M.

Total Acres 14.50
Excluded Acres 11.00

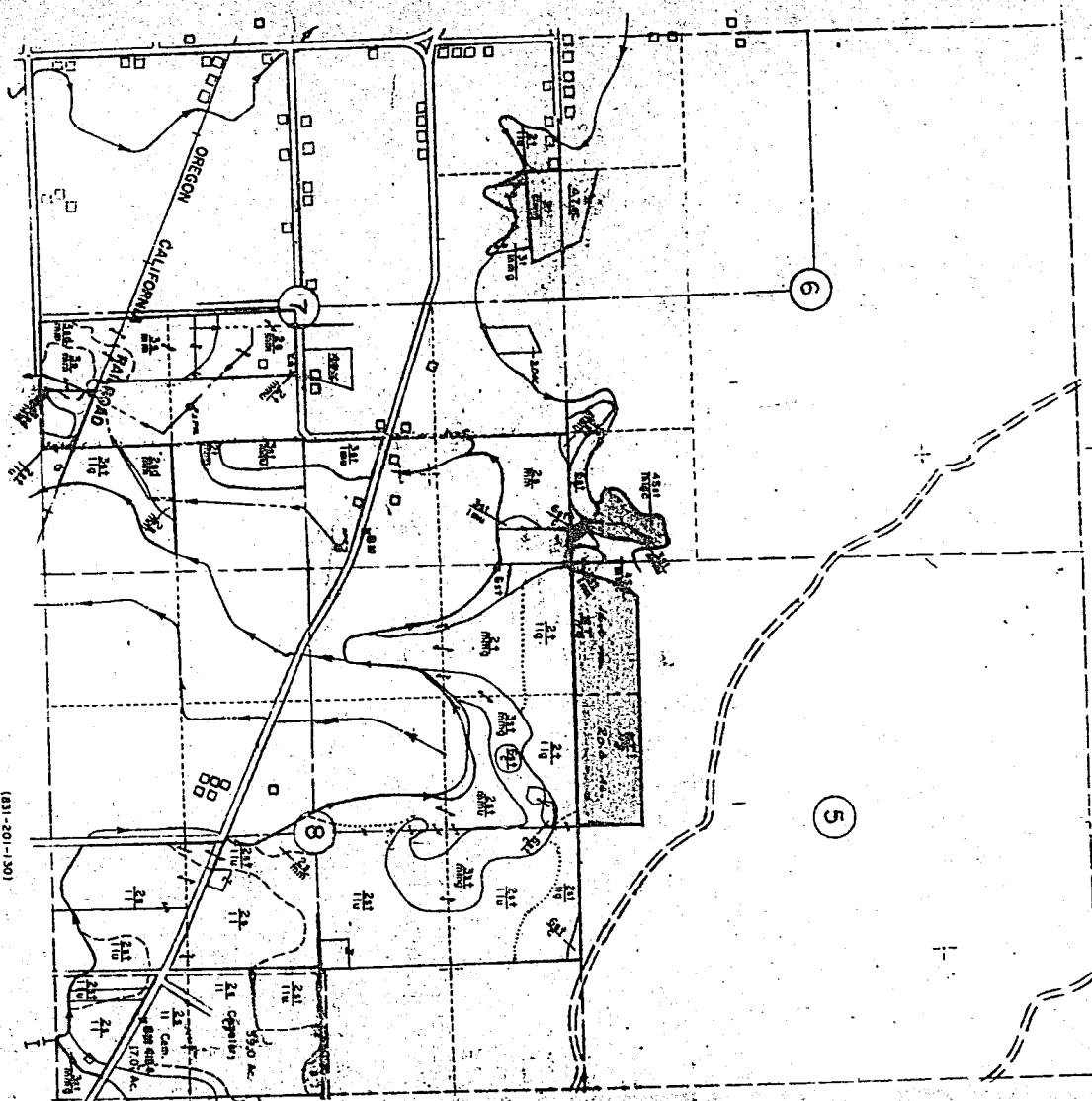
Date Filed: August 11, 1981.

*Ret Klamath Irrigation Dist.
6640 KID Lane
K. J. J. J.*

9832

1,675,000 E

1:50,000 N

190,000 N
NORTH BASE
4192

(831-201-130)

1,685,000 E

STATE OF OREGON; COUNTY OF KLAMATH; ss.

Filed for record

1:04

this 2 day of August A.D. 19 82 at 1 o'clock P.M. -
Articles of Incorporations
duly recorded in Vol. M 82 of 1 on p. 9829

Fee \$16.00

EVELYN BIERN, County

By J. M. [Signature]

LAND CLASSIFICATION

SEC. 4, 5, 6, 7, 8, 9 T. 39 S. R. 10 E. W. 4

CLASSIFIED - CHECKED - J. D. - J. G. -

DRAWN - S. B. - G. D. -

COMPUTED - A. D. -

REVIEWED - J. D. -

831-201-129

KLAMATH PROJECT - EIT - OREGON - CALIFORNIA

ORGANIZATION OF DECLARATION

UNITED STATES

BUREAU OF RECLAMATION

RECLAMATION PROJECT - EIT - OREGON - CALIFORNIA

RECLAMATION PROJECT - EIT - OREGON - CALIFORNIA

RECLAMATION PROJECT - EIT - OREGON - CALIFORNIA

RECLAMATION PROJECT - EIT - OREGON - CALIFORNIA

RECLAMATION PROJECT - EIT - OREGON - CALIFORNIA

RECLAMATION PROJECT - EIT - OREGON - CALIFORNIA

RECLAMATION PROJECT - EIT - OREGON - CALIFORNIA

RECLAMATION PROJECT - EIT - OREGON - CALIFORNIA

RECLAMATION PROJECT - EIT - OREGON - CALIFORNIA

RECLAMATION PROJECT - EIT - OREGON - CALIFORNIA

RECLAMATION PROJECT - EIT - OREGON - CALIFORNIA

RECLAMATION PROJECT - EIT - OREGON - CALIFORNIA

RECLAMATION PROJECT - EIT - OREGON - CALIFORNIA

RECLAMATION PROJECT - EIT - OREGON - CALIFORNIA

RECLAMATION PROJECT - EIT - OREGON - CALIFORNIA

RECLAMATION PROJECT - EIT - OREGON - CALIFORNIA

RECLAMATION PROJECT - EIT - OREGON - CALIFORNIA

RECLAMATION PROJECT - EIT - OREGON - CALIFORNIA

RECLAMATION PROJECT - EIT - OREGON - CALIFORNIA

RECLAMATION PROJECT - EIT - OREGON - CALIFORNIA

RECLAMATION PROJECT - EIT - OREGON - CALIFORNIA

RECLAMATION PROJECT - EIT - OREGON - CALIFORNIA

RECLAMATION PROJECT - EIT - OREGON - CALIFORNIA

RECLAMATION PROJECT - EIT - OREGON - CALIFORNIA

RECLAMATION PROJECT - EIT - OREGON - CALIFORNIA

RECLAMATION PROJECT - EIT - OREGON - CALIFORNIA

RECLAMATION PROJECT - EIT - OREGON - CALIFORNIA

RECLAMATION PROJECT - EIT - OREGON - CALIFORNIA

RECLAMATION PROJECT - EIT - OREGON - CALIFORNIA

RECLAMATION PROJECT - EIT - OREGON - CALIFORNIA

RECLAMATION PROJECT - EIT - OREGON - CALIFORNIA

RECLAMATION PROJECT - EIT - OREGON - CALIFORNIA

RECLAMATION PROJECT - EIT - OREGON - CALIFORNIA

RECLAMATION PROJECT - EIT - OREGON - CALIFORNIA

RECLAMATION PROJECT - EIT - OREGON - CALIFORNIA

RECLAMATION PROJECT - EIT - OREGON - CALIFORNIA

RECLAMATION PROJECT - EIT - OREGON - CALIFORNIA

RECLAMATION PROJECT - EIT - OREGON - CALIFORNIA

RECLAMATION PROJECT - EIT - OREGON - CALIFORNIA

RECLAMATION PROJECT - EIT - OREGON - CALIFORNIA

RECLAMATION PROJECT - EIT - OREGON - CALIFORNIA

RECLAMATION PROJECT - EIT - OREGON - CALIFORNIA

RECLAMATION PROJECT - EIT - OREGON - CALIFORNIA

RECLAMATION PROJECT - EIT - OREGON - CALIFORNIA

RECLAMATION PROJECT - EIT - OREGON - CALIFORNIA

RECLAMATION PROJECT - EIT - OREGON - CALIFORNIA

RECLAMATION PROJECT - EIT - OREGON - CALIFORNIA

RECLAMATION PROJECT - EIT - OREGON - CALIFORNIA

RECLAMATION PROJECT - EIT - OREGON - CALIFORNIA

RECLAMATION PROJECT - EIT - OREGON - CALIFORNIA

RECLAMATION PROJECT - EIT - OREGON - CALIFORNIA

RECLAMATION PROJECT - EIT - OREGON - CALIFORNIA

RECLAMATION PROJECT - EIT - OREGON - CALIFORNIA

RECLAMATION PROJECT - EIT - OREGON - CALIFORNIA

RECLAMATION PROJECT - EIT - OREGON - CALIFORNIA

RECLAMATION PROJECT - EIT - OREGON - CALIFORNIA

RECLAMATION PROJECT - EIT - OREGON - CALIFORNIA

RECLAMATION PROJECT - EIT - OREGON - CALIFORNIA

RECLAMATION PROJECT - EIT - OREGON - CALIFORNIA

RECLAMATION PROJECT - EIT - OREGON - CALIFORNIA

RECLAMATION PROJECT - EIT - OREGON - CALIFORNIA

RECLAMATION PROJECT - EIT - OREGON - CALIFORNIA

RECLAMATION PROJECT - EIT - OREGON - CALIFORNIA

RECLAMATION PROJECT - EIT - OREGON - CALIFORNIA

RECLAMATION PROJECT - EIT - OREGON - CALIFORNIA

RECLAMATION PROJECT - EIT - OREGON - CALIFORNIA

RECLAMATION PROJECT - EIT - OREGON - CALIFORNIA

RECLAMATION PROJECT - EIT - OREGON - CALIFORNIA

RECLAMATION PROJECT - EIT - OREGON - CALIFORNIA

RECLAMATION PROJECT - EIT - OREGON - CALIFORNIA

RECLAMATION PROJECT - EIT - OREGON - CALIFORNIA

RECLAMATION PROJECT - EIT - OREGON - CALIFORNIA

RECLAMATION PROJECT - EIT - OREGON - CALIFORNIA

RECLAMATION PROJECT - EIT - OREGON - CALIFORNIA

RECLAMATION PROJECT - EIT - OREGON - CALIFORNIA

RECLAMATION PROJECT - EIT - OREGON - CALIFORNIA

RECLAMATION PROJECT - EIT - OREGON - CALIFORNIA

RECLAMATION PROJECT - EIT - OREGON - CALIFORNIA

RECLAMATION PROJECT - EIT - OREGON - CALIFORNIA