



Weyerhaeuser

P.O. Box 9
Klamath Falls, Oregon 97601
Tel (503) 884-2241

January 6, 1993

Mrs. Evelyn Biehn
Klamath County Clerk
Klamath County Courthouse
316 Main Street
Klamath Falls, OR 97601

RE: WEYERHAEUSER COMPANY TEMPORARY LANDFILL
SE 1/4 NW 1/4, SECTION 34, T36S, R14E, W.M. - Permit #1128

Dear Mrs. Biehn:

Pursuant to ORS 340-61-043 (1)(a), Weyerhaeuser Company is recording the existence of an approved, closed woodwaste landfill. The location is the SE 1/4 NW 1/4 of Section 34, Township 36 South, Range 14 East, W.M.

The landfill was used for woodwaste and minor amounts of rock and concrete. It was the site of the old mill log storage pond and infeed. It was 450 feet by 230 feet and 8 feet deep. It was filled in 1988 and 1989 and covered with soil (Bly loam) to a depth of 2 feet and seeded to grass using a local seed mix called Klamath Blend.

There is currently an excellent stand of grass on the site and no toxic substances or gasses are present. A plat map location is herewith recorded as Exhibit A.

Sincerely,

WEYERHAEUSER COMPANY
Klamath Falls Operations

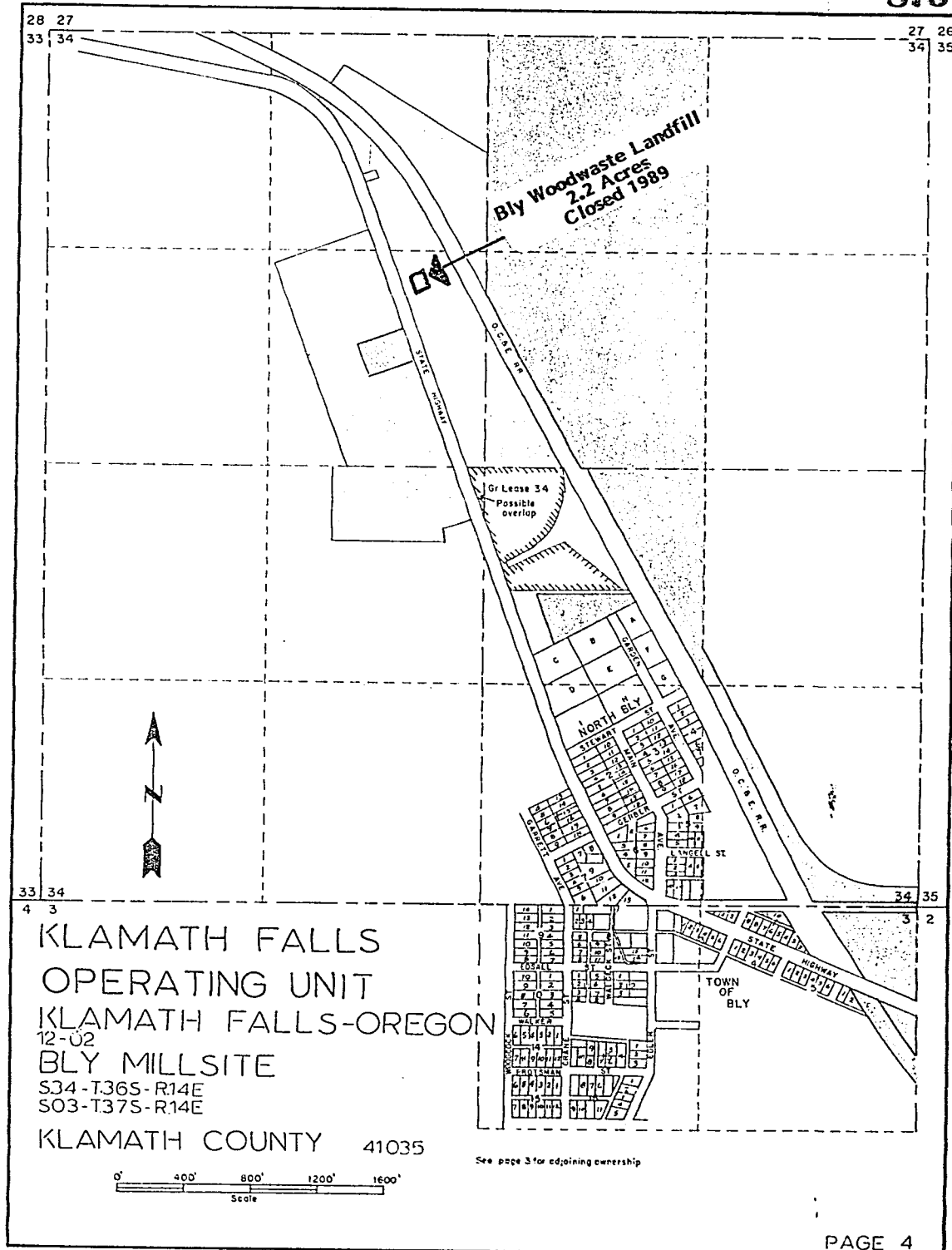
John D. Monfore
Land Use Manager

JDM:ch

Enclosure

Exhibit A

876



STATE OF OREGON: COUNTY OF KLAMATH: ss.

Filed for record at request of Weyerhaeuser co. the 12th day
of Jan. A.D., 1993 at 2:16 o'clock P.M., and duly recorded in Vol. M93
of Deeds on Page 875.

FEE \$15.00

Evelyn Biehn - County Clerk

By [Signature]