

ORDINANCE NO. 98-8AN ORDINANCE CORRECTING THE MAP INCORPORATED INTO
ORDINANCE 98-2

WHEREAS, Ordinance No 98-2 did annex the "Big 5" development located on 2 acres on Washburn Way; and

WHEREAS, the legal description of said annexation as set forth in the ordinance correctly described the annexation; and

WHEREAS, the map attached to the ordinance as Exhibit A did incorrectly identify the parcel to be annexed; NOW THEREFORE

THE CITY OF KLAMATH FALLS ORDAINS AS FOLLOWS:

The map incorporated as Exhibit A to Ordinance No. 98-2 is hereby corrected to appear as set forth in attached Exhibit A to this Ordinance.

Passed by the Council of the City of Klamath Falls, Oregon, the 18th day of May, 1998.

Presented to the Mayor (~~Mayor Pro-tem~~), approved and signed this 19th day of May, 1998.

[Signature]
Mayor (~~Mayor Pro-tem~~)

ATTEST:

[Signature]
~~City Recorder~~ (Deputy Recorder)

STATE OF OREGON
COUNTY OF KLAMATH
CITY OF KLAMATH FALLS } ss

I, [Signature], ~~Recorder~~ (Deputy Recorder) for the City of Klamath Falls, Oregon, do hereby certify that the foregoing is a true and correct copy of an Ordinance duly adopted by the Council of the City of Klamath Falls, Oregon, at the meeting held on the 18th day of May, 1998, and thereafter approved and signed by the Mayor (~~Mayor Pro-tem~~) and attested by the ~~City Recorder~~ (Deputy Recorder).

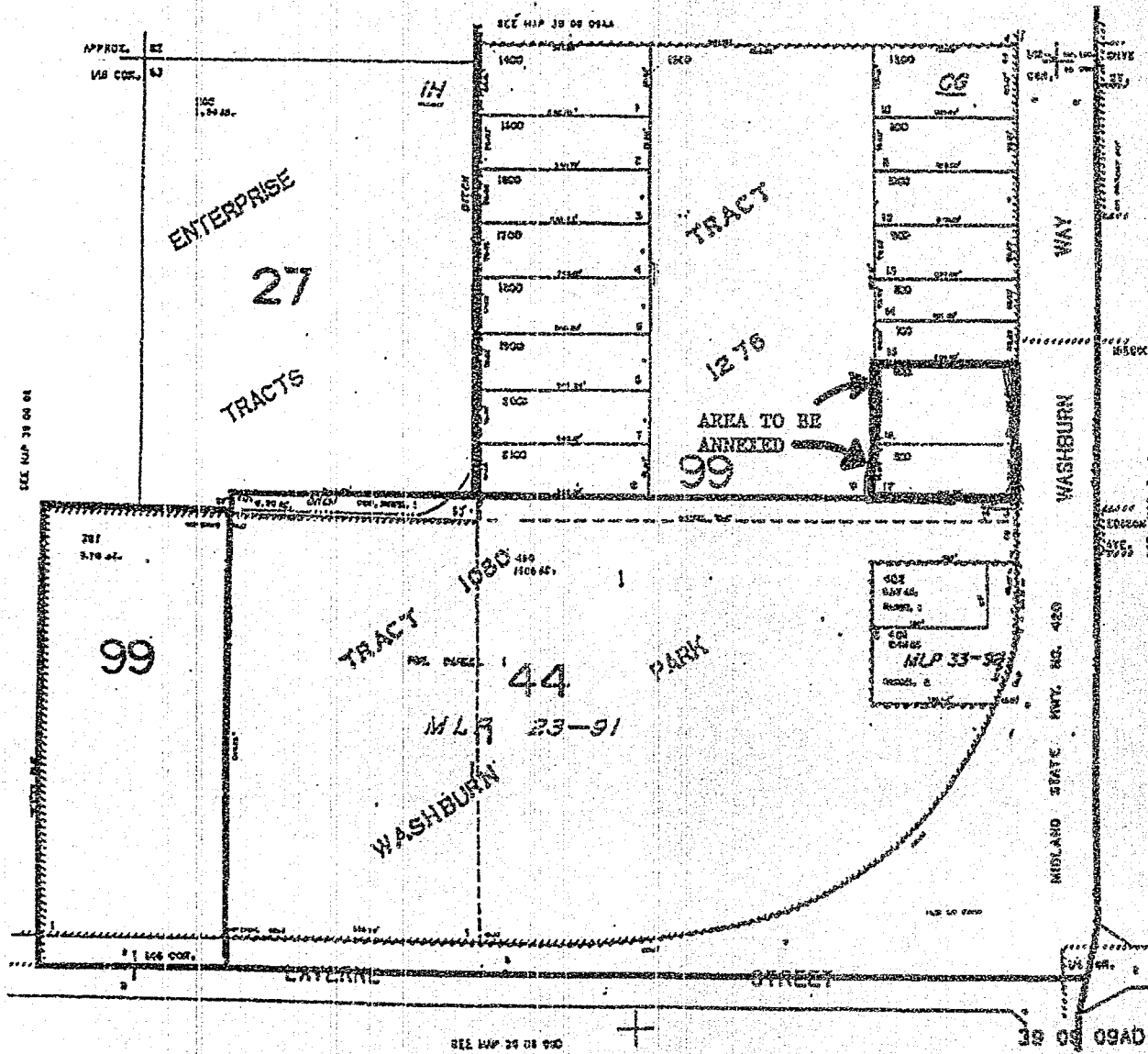
[Signature]
~~City Recorder~~ (Deputy Recorder)

96 JUN 11 AS:OB

15-

EXHIBIT "A"

KATH COUNTY



Filed for record at request of City Of Klamath Falls the 11th day
of June A.D., 19 98 at 9:03 o'clock AM., and duly recorded in Vol. M98,
of Deeds on Page 19888.

By Bernetha G. Letsch, County Clerk