



BOARD OF COUNTY COMMISSIONERS

IN AND FOR THE COUNTY OF KLAMATH, STATE OF OREGON

In the Matter of Releasing a)
Street Plug on the Easterly)
End of HAGER LANE,)
10th Addition to Sunset)
Village Klamath County, Oregon)

ORDER # 2007-029

WHEREAS, a one-foot Street Plug was placed on the Easterly End of **Hager Lane**, as platted in **Tract #1194, 10th Addition to Sunset Village** subdivision located in the W1/2 SE1/4 of Section 12, Township 39 South, Range 9 East, W.M. to control land development adjacent to it, and

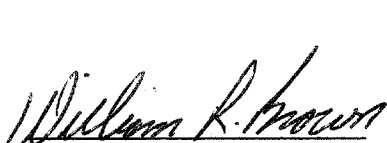


WHEREAS, said Street Plug as dedicated to Klamath County was to be released by the Board of County Commissioners when the adjoining property was developed, and

WHEREAS, development of proposed Tract #1452 on adjoining property will require removal of the Street Plug, and

NOW THEREFORE, IT IS HERBY ORDERED that said Street Plug is hereby released and declared a portion of the public way with in the right of way of said **Hager Lane**. This Order to be effective on the date that Tract #1452 is filed for record by the County Clerk.

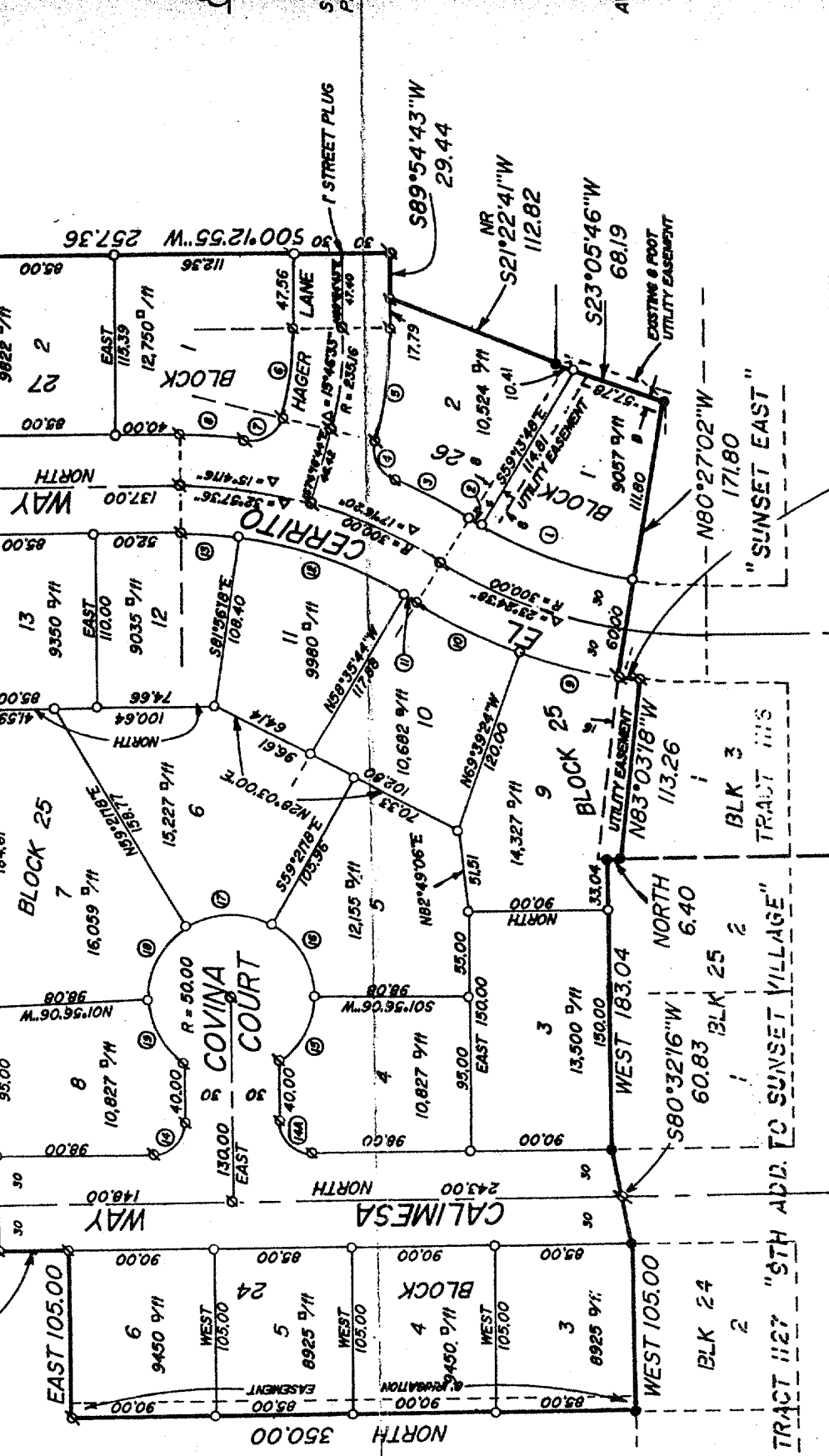
DONE AND DATED THIS 31st DAY OF October, 2006.

KLAMATH COUNTY BOARD OF COMMISSIONERS

 Bill Brown Chairman	 John Elliott Commissioner	 Al Switzer Commissioner
Awarded <u>WB</u>	Awarded <u>JE</u>	Awarded <u>AS</u>
Rejected _____	Rejected _____	Rejected _____
Date <u>10/31/06</u>	Date <u>10/31/06</u>	Date <u>10-31-2006</u>

Ken Conn. Journal

INITIAL POINT 2"=30' (R.L.M.)
WITH OLS 2442 WILSHIRE



VERDA VISTA DRIVE

TRACT 1127 "9TH ADD. TO SUNSET VILLAGE"

BLK 24

BLK 25

BLK 27

BLK 28

BLK 29

BLK 30

BLK 31

BLK 32

BLK 33

BLK 34

BLK 35

BLK 36

BLK 37

BLK 38

BLK 39

BLK 40

BLK 41

BLK 42

BLK 43

BLK 44

BLK 45

BLK 46

BLK 47

BLK 48

BLK 49

BLK 50

BLK 51

BLK 52

BLK 53

BLK 54

BLK 55

BLK 56

BLK 57

BLK 58

BLK 59

BLK 60

BLK 61

BLK 62

BLK 63

BLK 64

BLK 65

BLK 66

BLK 67

BLK 68

BLK 69

BLK 70

BLK 71

BLK 72

BLK 73

BLK 74

BLK 75

BLK 76

BLK 77

BLK 78

BLK 79

BLK 80

BLK 81

BLK 82

BLK 83

BLK 84

BLK 85

BLK 86

BLK 87

BLK 88

BLK 89

BLK 90

BLK 91

BLK 92

BLK 93

BLK 94

BLK 95

BLK 96

BLK 97

BLK 98

BLK 99

BLK 100

1 HERED
"TENTH ADD
15.00
 $\Delta = 02^{\circ}36'16''$
 $R = 330.00$
 $LC = 508^{\circ}4'50''W$ 15.00