

2015-004389
Klamath County, Oregon



05/07/2015 10:59:00 AM

Fee: NO FEE

**BEFORE THE BOARD OF COUNTY COMMISSIONERS
FOR KLAMATH COUNTY, OREGON**

IN THE MATTER OF VACATION OF A LOT)
LINE AND ASSOCIATED 16-FOOT UTILITY)
EASEMENT COMMON TO LOTS 27 AND)
28, BLOCK 5, SPRAGUE RIVER VALLEY)
ACRES SUBDIVISION SITUATED IN)
SECTION 35, TOWNSHIP 35 SOUTH,)
RANGE 12 EAST OF THE WILLAMETTE)
MERIDIAN, KLAMATH COUNTY, OREGON.

FINAL ORDER

No. OR 2015-084

WHEREAS in accordance with the provisions of ORS 368.351, a petition containing the acknowledged signatures of 100% of the owners of the property (William and Debra Cornell) identified in Exhibit "A" attached where the lot line and associated 16-foot utility easement to be vacated has been submitted and accepted by the Board of County Commissioners; and

WHEREAS the Board of County Commissioners directed the Planning Director to submit a report regarding the petition for lot line vacation; and

WHEREAS the Planning Director filed with the Board of County Commissioners a report regarding the petition for lot line vacation which was accepted; and

WHEREAS after duly considering the report and other documentation presented, the Board of County Commissioners finds that the vacation of the lot line within the property identified in Exhibit "A" is acceptable and should be granted;

NOW, THEREFORE IT IS ORDERED that the petition is hereby granted and the identified lot line within the property is vacated.

DONE AND DATED THIS 5 day of May, 2015.

Tom Mullen
Chairman

Reep Mrs
Commissioner

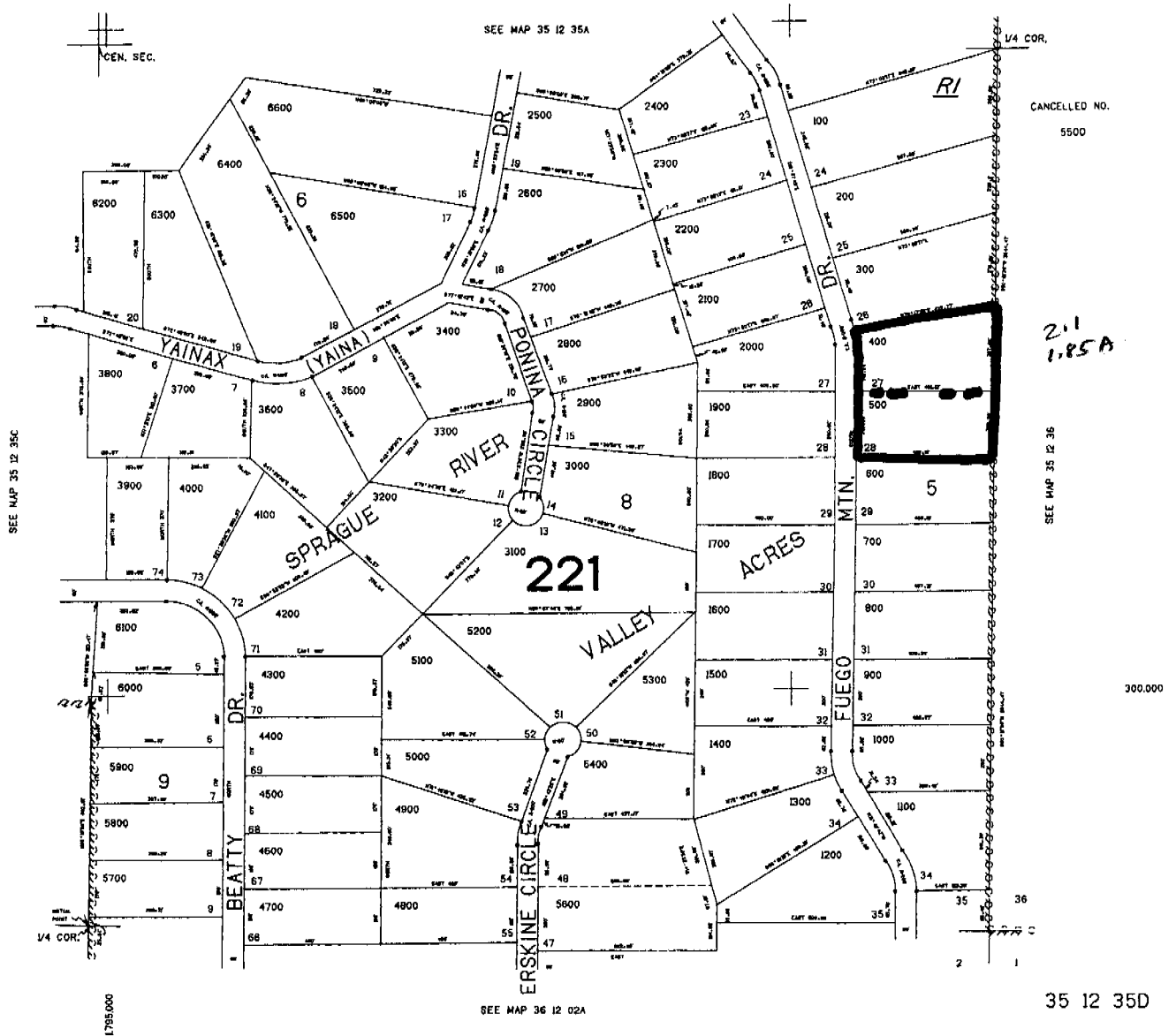
James Bellet
Commissioner

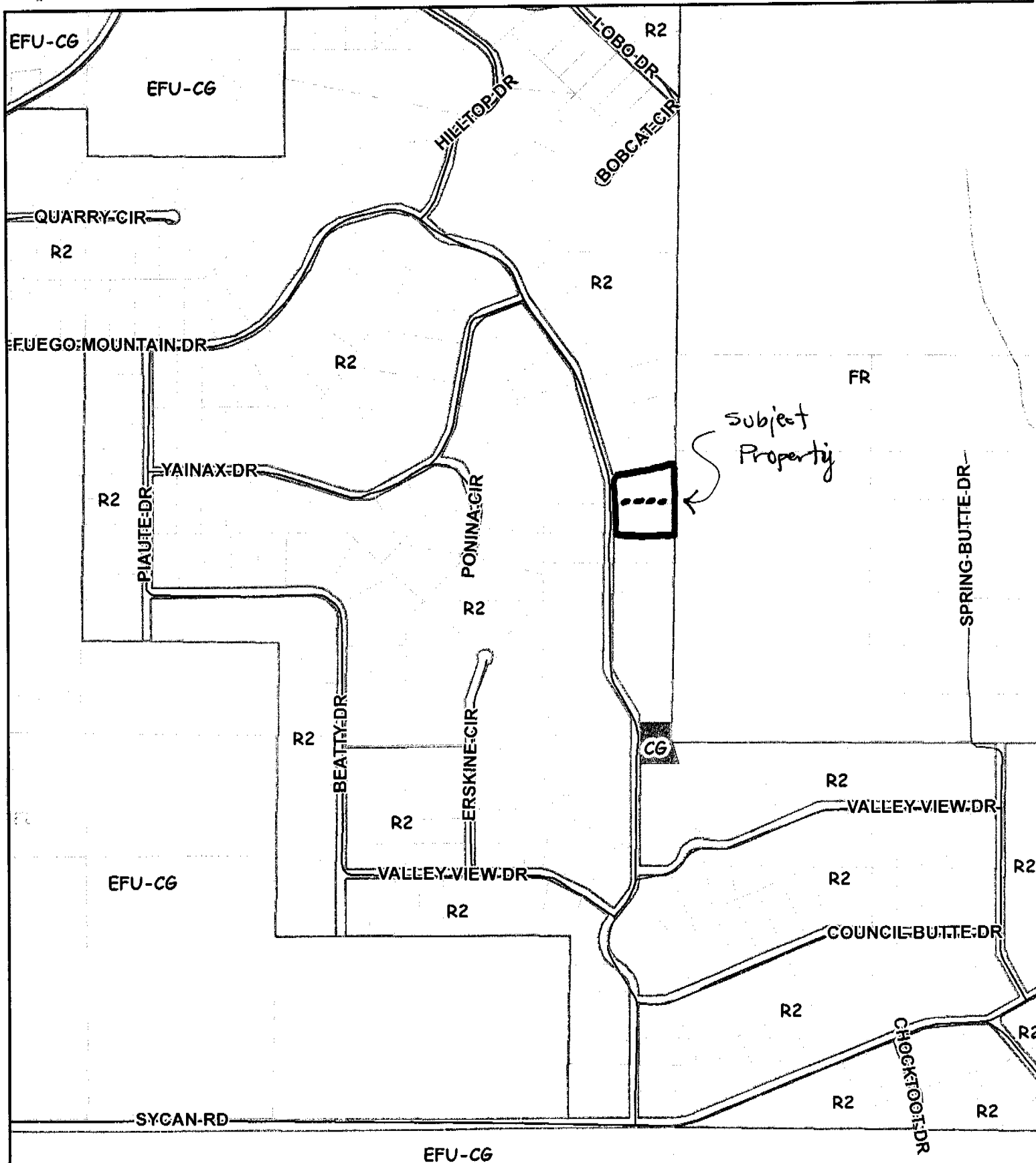
EXHIBIT "A"

Vacation of a property line and associated 16-foot utility easement common to Lots 27 and 28,
Block 5, Sprague River Valley Acres Subdivision located in Klamath County, Oregon

35 12 35D

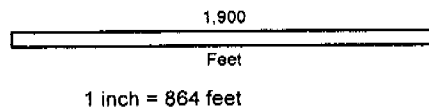
1-200-





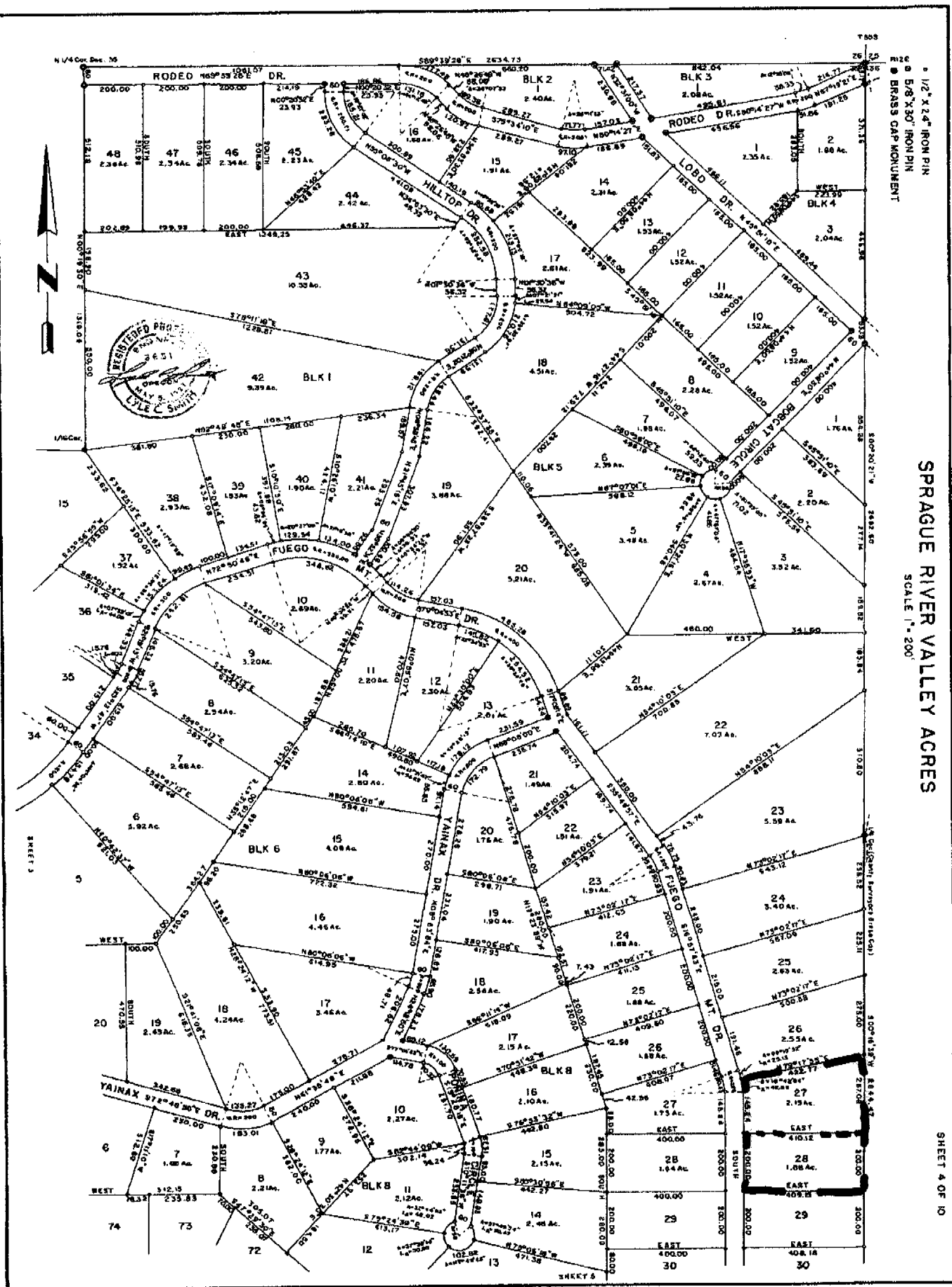
Klamath County

-Vicinity-



Date Printed: 4-6-15

This map is for planning purposes only. This map has been prepared for internal use by Klamath County only. Accuracy and completeness is not guaranteed to any other agency, public or private.



1/2" x 4" IRON PIN
5/8" x 30" IRON PIN
BRASS CAP MONUMENT

SPRAGUE RIVER VALLEY ACRES
SCALE 1"=200'