



BEFORE THE BOARD OF COUNTY COMMISSIONERS  
FOR KLAMATH COUNTY, OREGON

IN THE MATTER OF VACATION OF A LOT )  
LINE AND ASSOCIATED 16-FOOT UTILITY )  
EASEMENT COMMON TO LOTS 3 AND 4, )  
BLOCK 10, TWO RIVERS NORTH )  
SUBDIVISION SITUATED IN SECTION 1, )  
TOWNSHIP 26 SOUTH, RANGE 7 EAST OF )  
THE WILLAMETTE MERIDIAN, KLAMATH )  
COUNTY, OREGON.

FINAL ORDER  
No. OR 2016-016

WHEREAS in accordance with the provisions of ORS 368.351, a petition containing the acknowledged signatures of 100% of the owners of the property (Wayne and Susan Powers) identified in Exhibit "A" attached where the lot line and associated 16-foot utility easement to be vacated has been submitted and accepted by the Board of County Commissioners; and

WHEREAS the Board of County Commissioners directed the Planning Director to submit a report regarding the petition for lot line vacation; and

WHEREAS the Planning Director filed with the Board of County Commissioners a report regarding the petition for lot line vacation which was accepted; and

WHEREAS after duly considering the report and other documentation presented, the Board of County Commissioners finds that the vacation of the lot line within the property identified in Exhibit "A" is acceptable and should be granted;

NOW, THEREFORE IT IS ORDERED that the petition is hereby granted and the identified lot line within the property is vacated.

DONE AND DATED THIS 27 day of October, 2015.

Tom Mallam  
Chairman

Kelley M. Morris  
Commissioner

James Bellet  
Commissioner

## **EXHIBIT "A"**

Vacation of a property line and associated 16-foot utility easement common to Lots 3 and 4,  
Block 10, Two Rivers North Subdivision located in Klamath County, Oregon

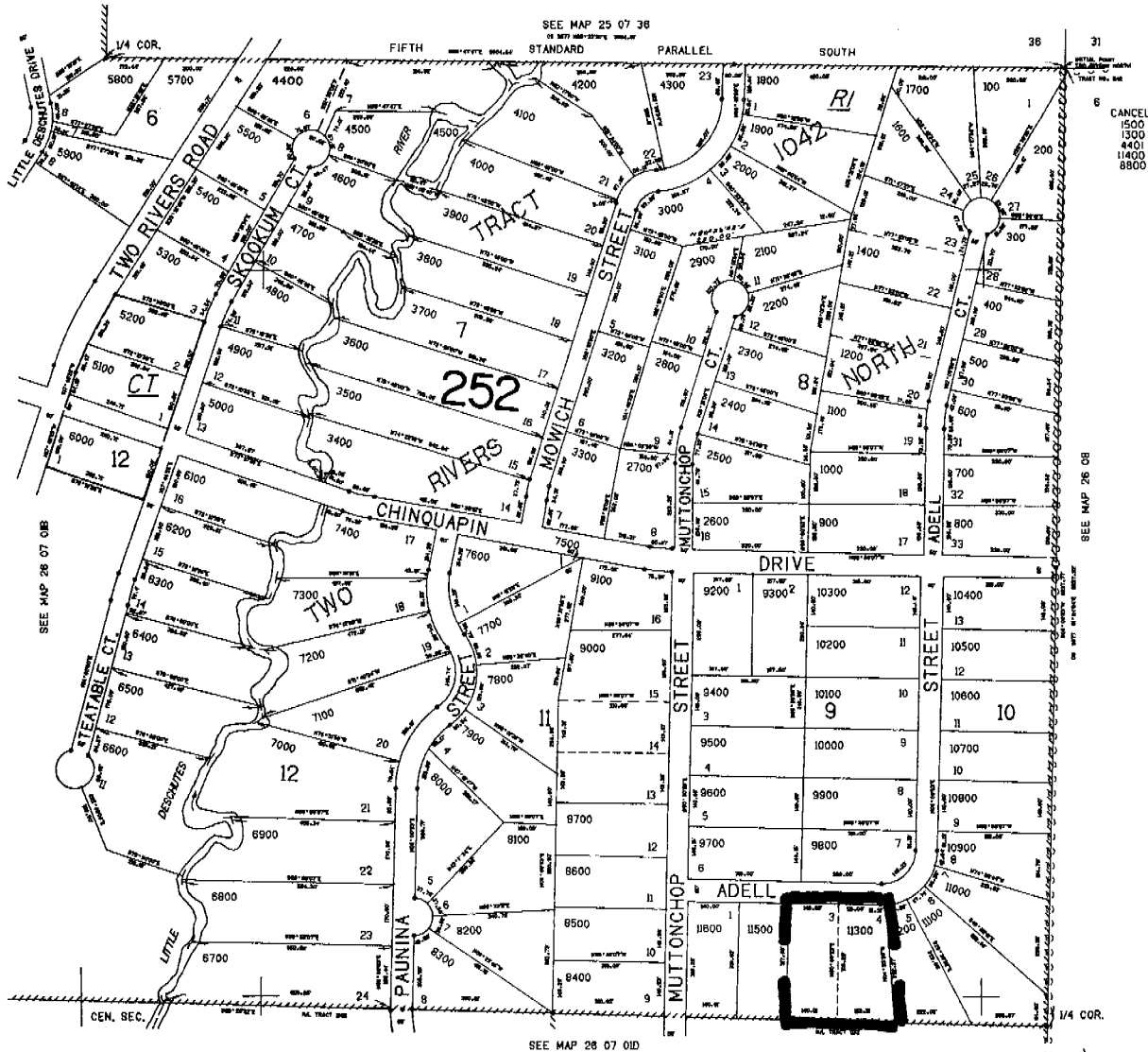


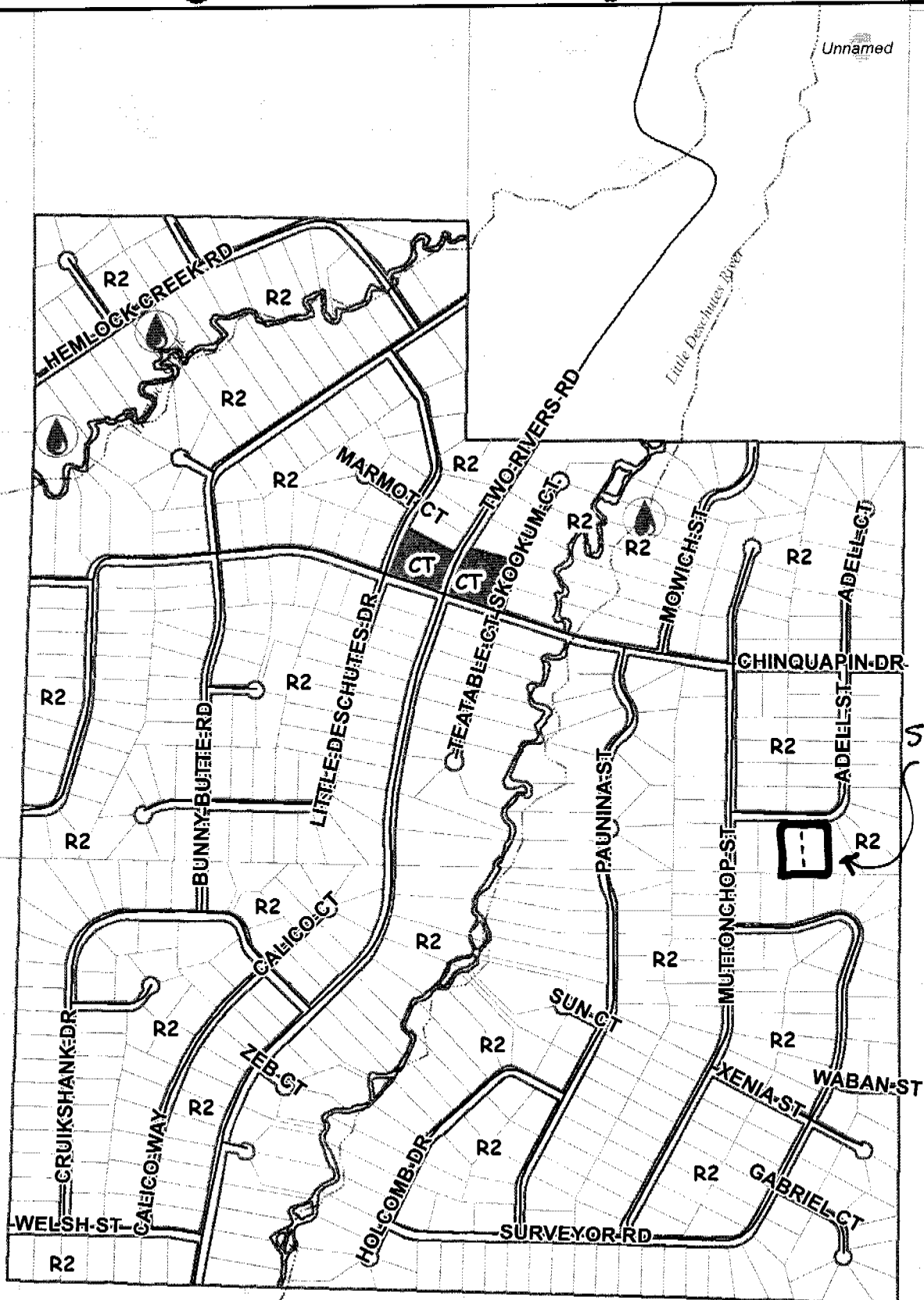
THIS MAP WAS PREPARED FOR  
ASSESSMENT PURPOSE ONLY

NE1/4 SEC. 01 T.26S. R.07E. W.M.  
KLAMATH COUNTY

1"=200'

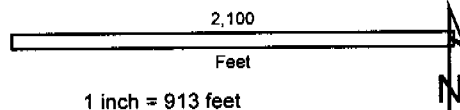
26 07 01A





**Klamath County**

*-Vicinity-*



Date Printed: 9-22-15

This map is for planning purposes only. This map has been prepared for internal use by Klamath County only. Accuracy and completeness is not guaranteed to any other agency, public or private.