



04/27/2017 09:10:48 AM

Fee: NO FEE

**BEFORE THE BOARD OF COUNTY COMMISSIONERS
FOR KLAMATH COUNTY, OREGON**

IN THE MATTER OF VACATION OF LOTS 7)
AND 8, BLOCK 6, MOUNTAIN LAKES)
HOMESITES (TRACT 1017), INCLUDING)
THE 16 FOOT PUBLIC UTILITY EASEMENT)
RUNNING NORTH AND SOUTH ALONG)
THE COMMON LOT LINE OF THE TWO)
LOTS, BUT NOT INCLUDING ALONG THE)
REAR LOT LINE, SITUATED IN SECTION)
17, TOWNSHIP 36 SOUTH, RANGE 6 EAST)
OF THE WILLAMETTE MERIDIAN,)
KLAMATH COUNTY, OREGON.)

FINAL ORDER

No. OR 2017-073

WHEREAS in accordance with the provisions of ORS 368.351, a petition containing the acknowledged signatures of 100% of the owners of the property (Larry Dugger) identified in Exhibit "A" attached where the lots to be vacated have been submitted and accepted by the Board of County Commissioners; and

WHEREAS the Board of County Commissioners directed the Planning Director to submit a report regarding the petition for vacation of the two lots; and

WHEREAS the Planning Director filed with the Board of County Commissioners a report regarding the petition for vacation of the lots which was accepted; and

WHEREAS after duly considering the report and other documentation presented, the Board of County Commissioners finds that vacation of the lots within the property identified in Exhibit "A" is acceptable and should be granted including the 16 foot utility easement running north and south along the common lot line of the two lots, but excluding the portion of the utility easement along the back lot lines;

NOW, THEREFORE IT IS ORDERED that the petition is hereby granted and the identified lots are vacated.

DONE AND DATED THIS 25th day of April, 2017.

Chair

Commissioner

Commissioner

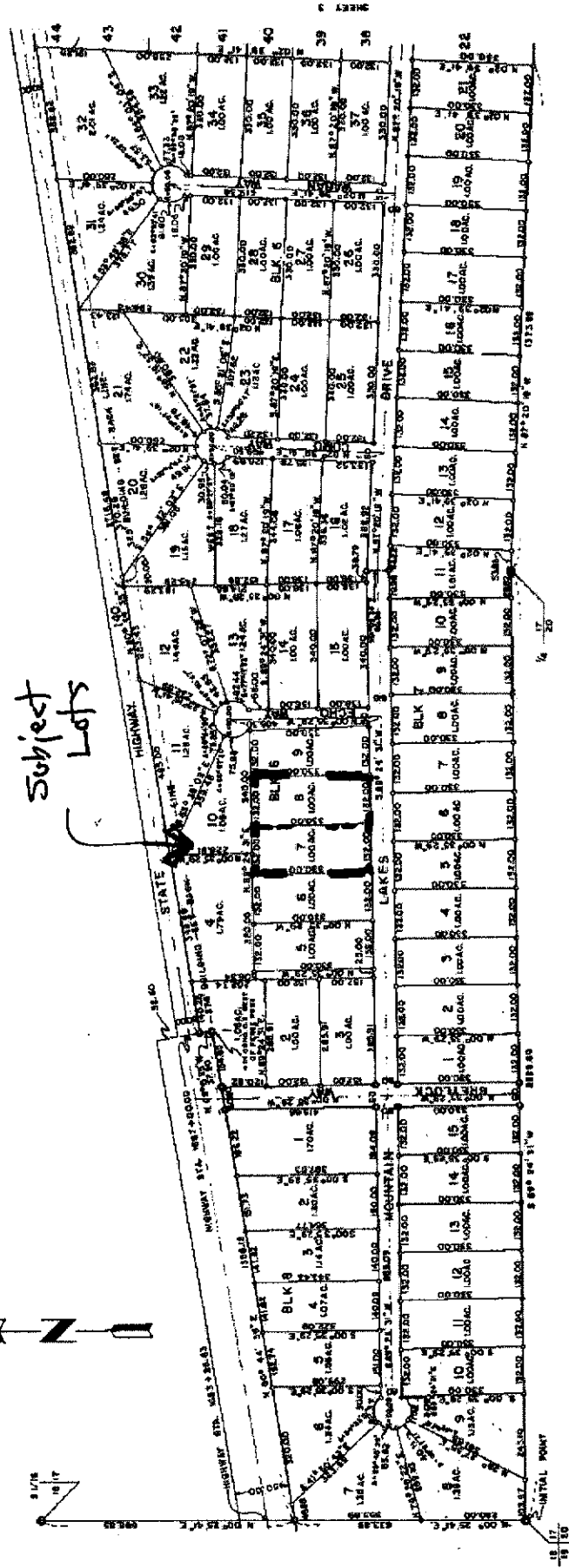
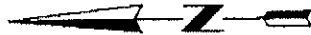
EXHIBIT "A"

Vacation of Lots 7 and 8, Block 6, Mountain Lakes Homesites (Tract 1017) located in Klamath County, Oregon, including the 16 foot public utility easement running north and south along the common lot line of the two lots, but excluding the portion of the utility easement along the back lot lines.

TRACT NO. 1017
MOUNTAIN LAKES HOMESITES
 SITUATED IN SECTIONS 16 & 17, T36S, R6EWM
 KLAMATH COUNTY, OREGON
 SCALE 1"=200'



Subject Lots



- 10' BY 10' FROM 944
- 50' BY 50' FROM 944
- ⊙ KLAMATH COUNTY SURVEYOR BRUCE DAP