



00211247201700114210040043

10/09/2017 08:38:03 AM

Fee: NO FEE

**BEFORE THE BOARD OF COUNTY COMMISSIONERS
FOR KLAMATH COUNTY, OREGON**

IN THE MATTER OF VACATION OF LOTS)
4, 5, 6 AND 7, BLOCK 3 OF ARROWHEAD)
VILLAGE SUBDIVISION SITUATED IN)
SECTION 2BB, TOWNSHIP 36 SOUTH,)
RANGE 6 EAST OF THE WILLAMETTE)
MERIDIAN, KLAMATH COUNTY, OREGON.)

FINAL ORDER

No. 2018-029

WHEREAS in accordance with the provisions of ORS 368.351, a petition containing the acknowledged signatures of 100% of the owners of the property (Ted and Eileen Oswald) identified in Exhibit "A" below where the lots to be vacated have been submitted and accepted by the Board of County Commissioners; and

WHEREAS the Board of County Commissioners directed the Planning Director to submit a report regarding the petition for vacation of the 4 lots; and

WHEREAS the Planning Director filed with the Board of County Commissioners a report regarding the petition for vacation of the lots which was accepted; and

WHEREAS after duly considering the report and other documentation presented, the Board of County Commissioners finds that vacation of the lots within the property identified in Exhibit "A," is acceptable and should be granted;

NOW, THEREFORE IT IS ORDERED that the petition is hereby granted and the identified lots are vacated.

DONE AND DATED THIS 3rd day of Oct, 2017.


Chair


Commissioner


Commissioner

EXHIBIT "A"

Vacation of Lots 4, 5, 6 and 7, Block 3 of Arrowhead Village subdivision located in Klamath County, Oregon.

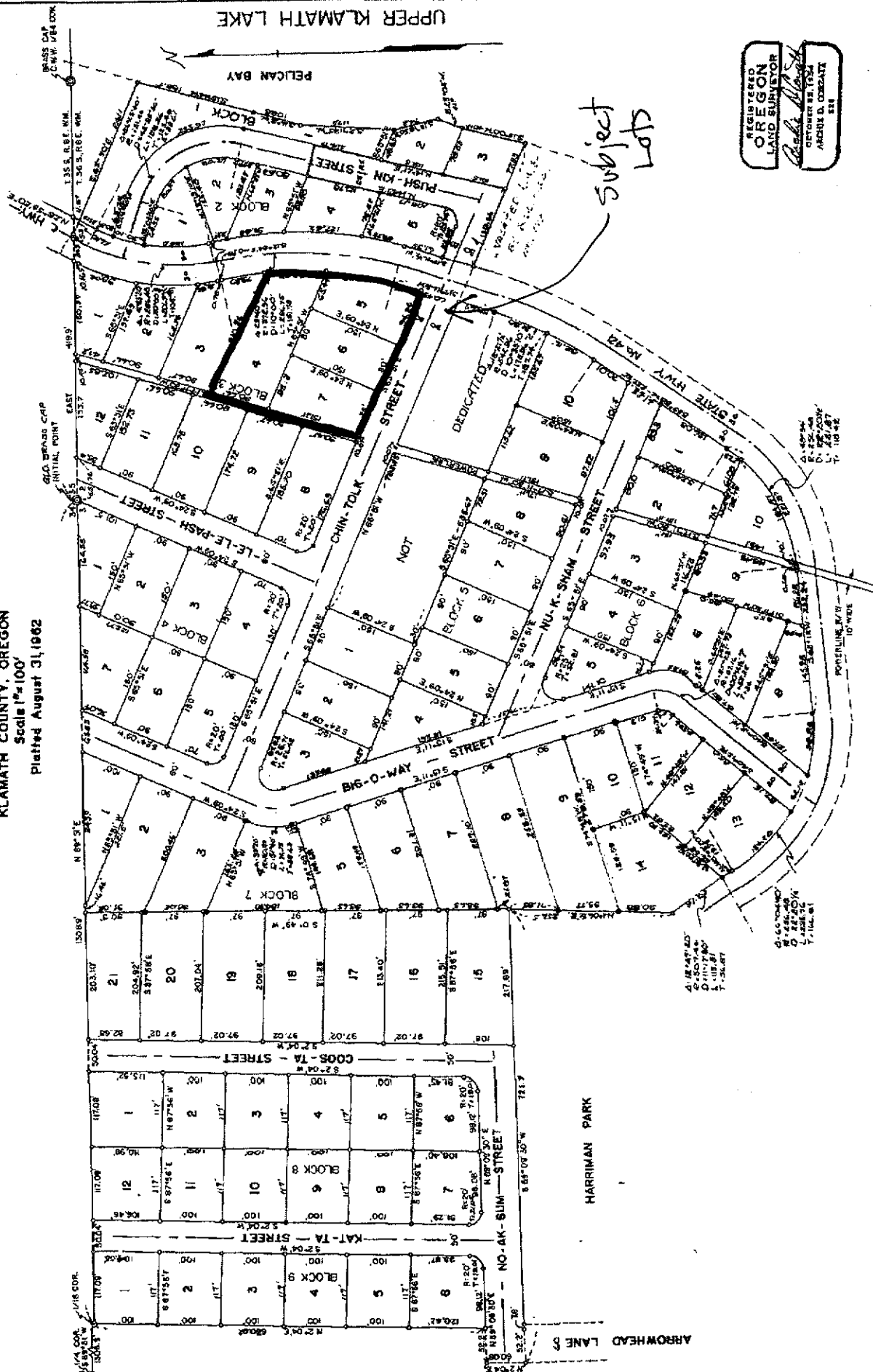
Plat of ARROWHEAD VILLAGE

Situated in Lot 4, Sec. 2 and Lots 1&2 Sec. 3,
T.36 S., R.6 E., WM

KLAMATH COUNTY, OREGON

Scale 1"=100'

Platted August 31, 1962



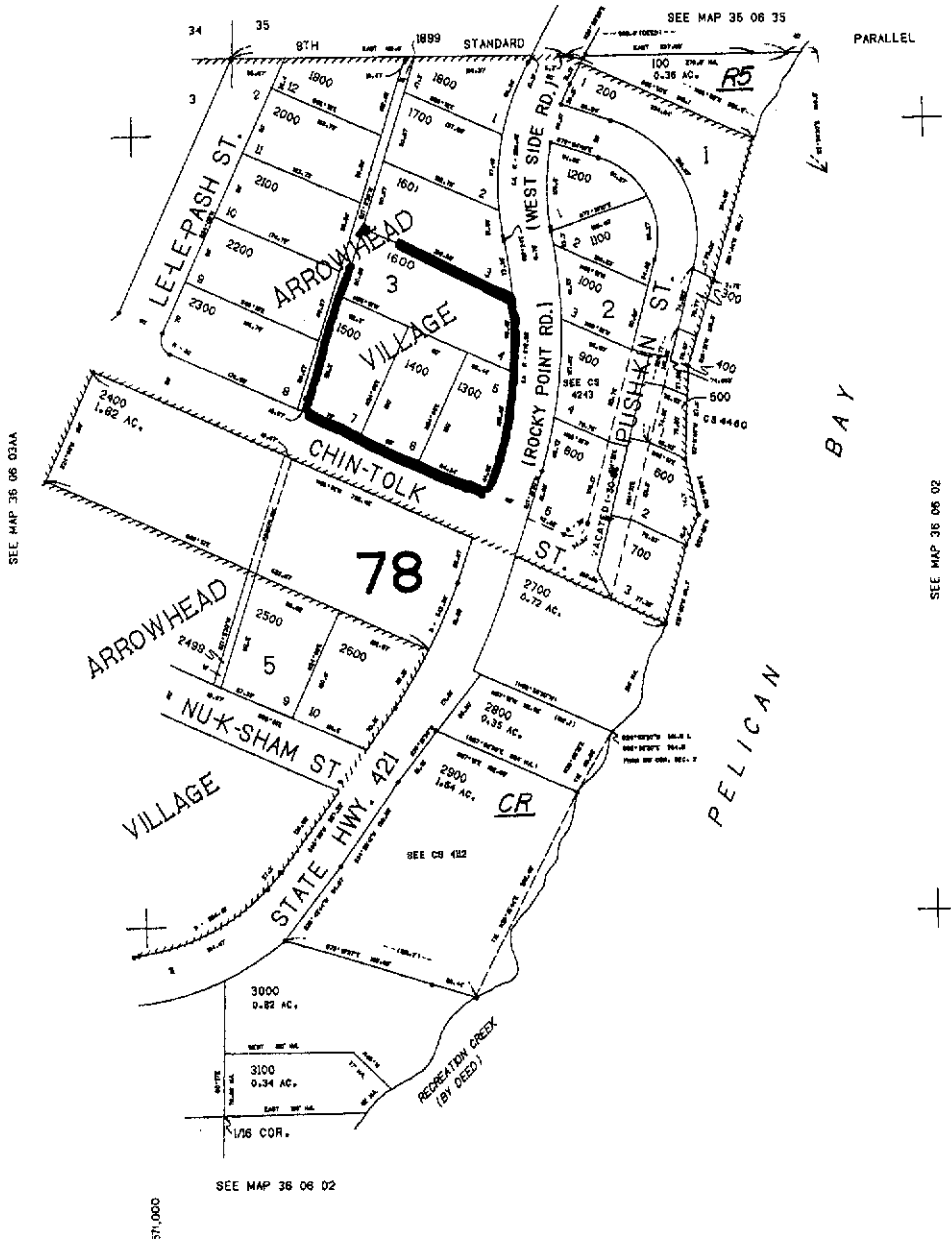
REGISTERED
OREGON
LAND SURVEYOR
Charles H. Hays
OFFICE 211 N. 10th
ASTORIA, OREGON 97103

THIS MAP WAS PREPARED FOR
ASSESSMENT PURPOSE ONLY.

NW1/4 NW1/4 SEC. 02 T.36S. R.06E. W.M.
KLAMATH COUNTY

1"=400'

36 06 02BB



PARALLEL

SOUTH

APPROX.
1/16 COR.

SEE MAP 36 06 03AA

SEE MAP 36 06 02

287.500

APPROX.
1/16 COR.

36 06 02BB