



00212366201700123420050059

10/26/2017 12:09:38 PM

Fee: NO FEE

Return to Commissioner's Journal

**BEFORE THE BOARD OF COUNTY COMMISSIONERS  
FOR KLAMATH COUNTY, OREGON**

IN THE MATTER OF VACATION OF LOTS )  
 14, 15, 16 AND 23, BLOCK 61 OF )  
 KLAMATH FALLS FOREST ESTATES HWY. )  
 66 UNIT, PLAT NO. 2 AND ASSOCIATED )  
 PUBLIC UTILITY EASEMENTS ALONG THE )  
 VACATED LOT LINES SITUATED IN )  
 SECTIONS 21A0 AND 21B0, TOWNSHIP 38 )  
 SOUTH, RANGE 11 EAST OF THE )  
 WILLAMETTE MERIDIAN, KLAMATH )  
 COUNTY, OREGON. )

**FINAL ORDER**No. 2018-032

**WHEREAS** in accordance with the provisions of ORS 368.351, a petition containing the acknowledged signatures of 100% of the owners of the property (Damon and Michelle Deter) identified in Exhibit "A" below where the lots to be vacated have been submitted and accepted by the Board of County Commissioners; and

**WHEREAS** the Board of County Commissioners directed the Planning Director to submit a report regarding the petition for vacation of the 4 lots; and

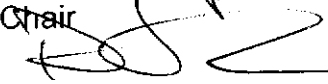
**WHEREAS** the Planning Director filed with the Board of County Commissioners a report regarding the petition for vacation of the lots which was accepted; and

**WHEREAS** after duly considering the report and other documentation presented, the Board of County Commissioners finds that vacation of the lots within the property identified in Exhibit "A," is acceptable and should be granted;

**NOW, THEREFORE IT IS ORDERED** that the petition is hereby granted and the identified lots are vacated.

**DONE AND DATED THIS** 17<sup>th</sup> day of October, 2017.

  
 Chair

  
 Commissioner

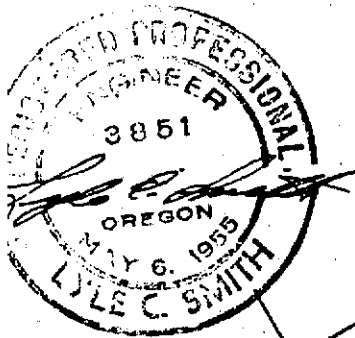
  
 Commissioner

**EXHIBIT "A"**

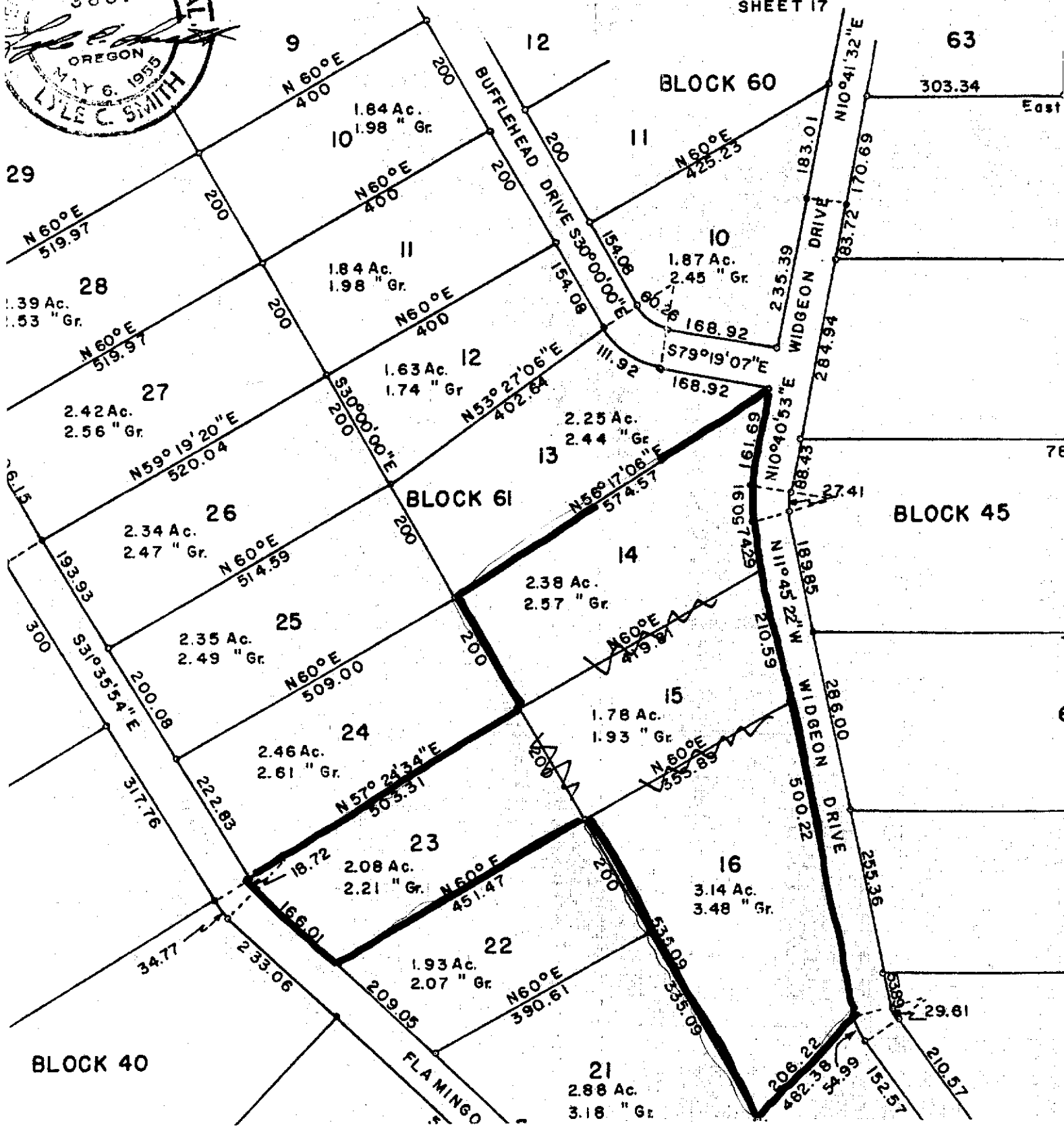
Vacation of Lots 14, 15, 16 and 23, Block 61 of Klamath Falls Forest Estates Hwy. 66 Unit, Plat No. 2 located in Klamath County, Oregon.

NO EXISTING UTILITIES  
SEE ATTACHED UTILITY EASEMENT, WHICH ALSO DEL. & VACATED  
BETWEEN ADJOINING LOTS 14, 15, 16, 23

# KLAMATH FALLS FOREST ESTATES HIGHWAY 66 UNIT PLAT NO.2



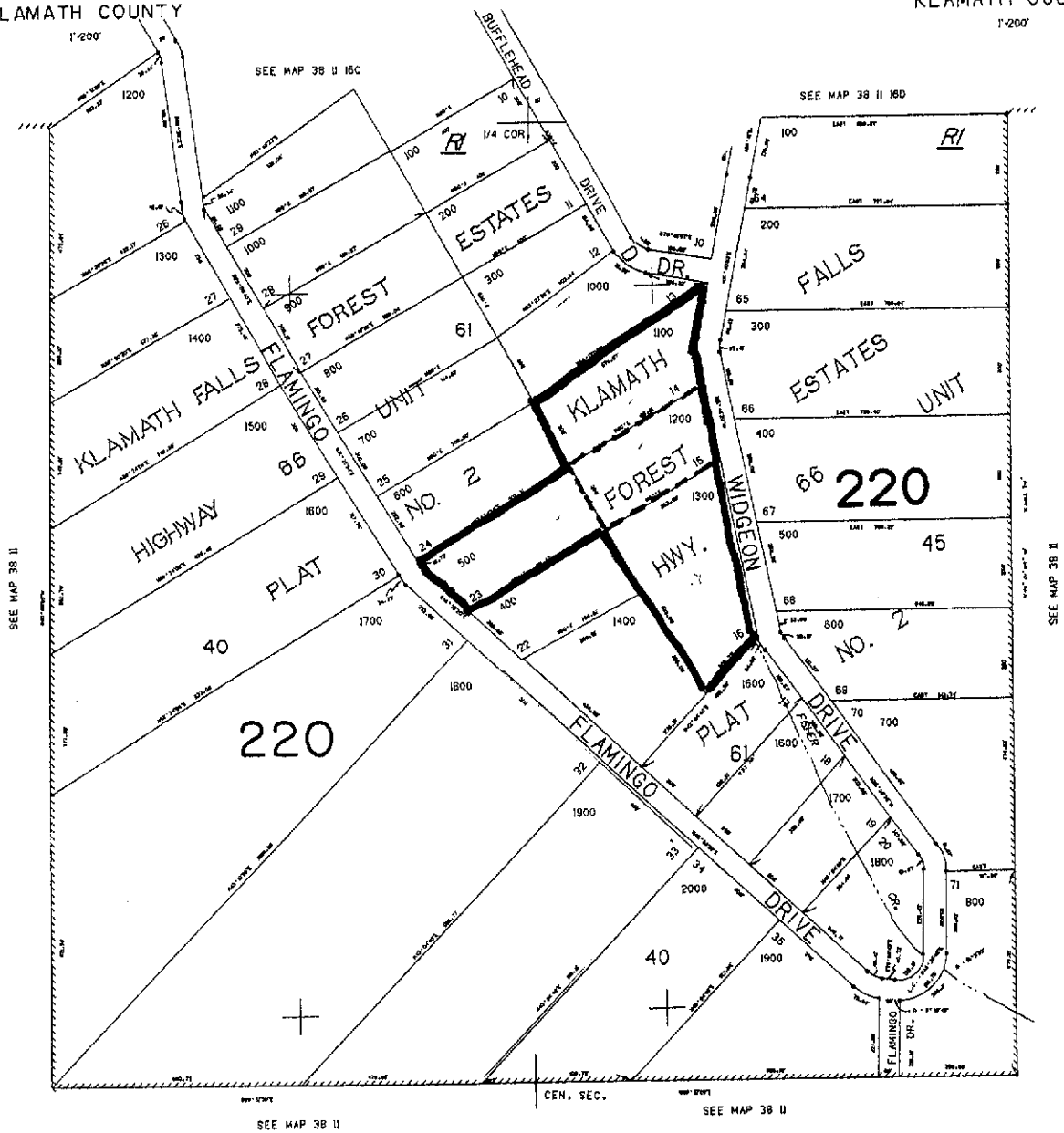
SHEET 17

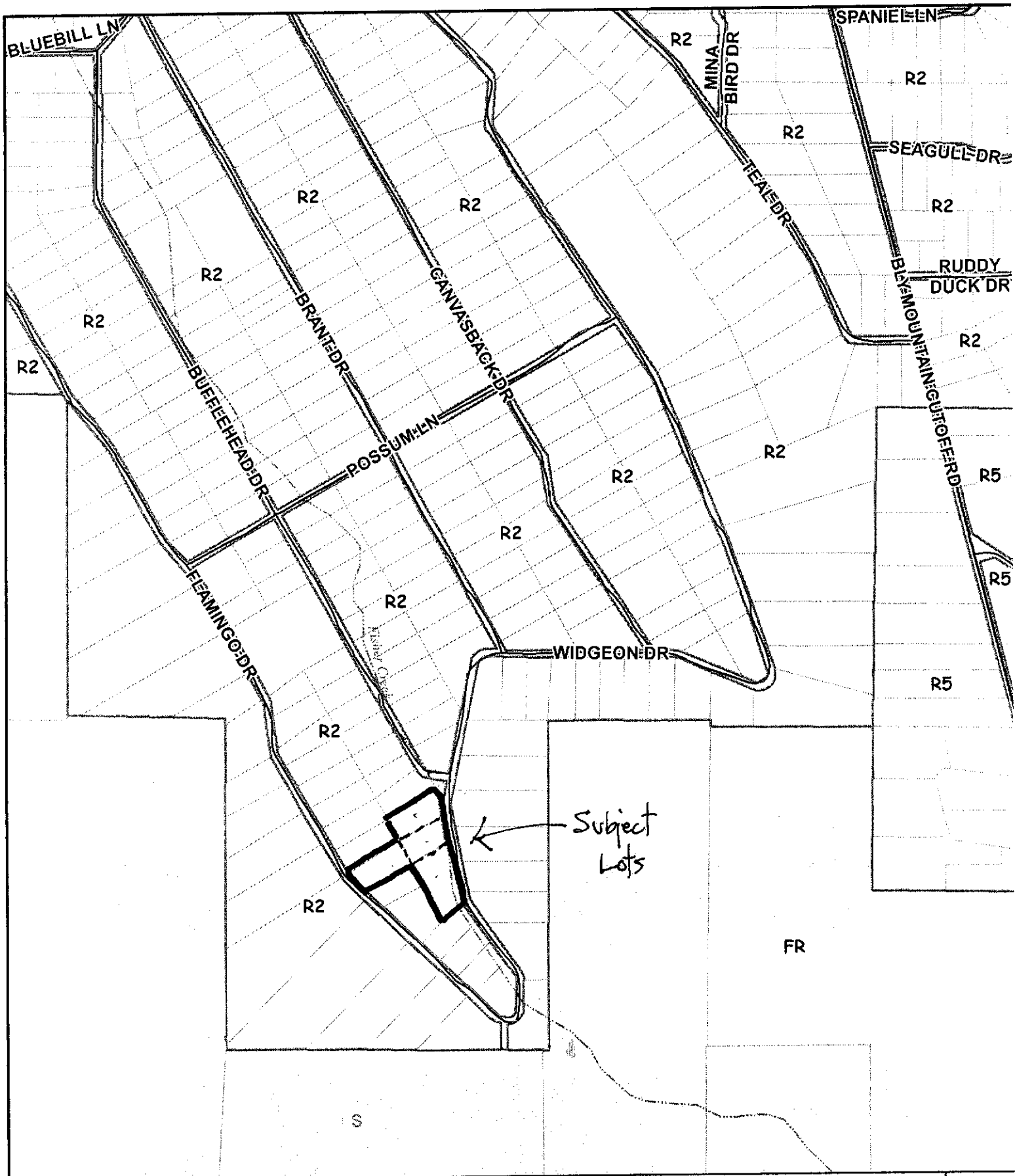


NW1/4 SEC. 21 T.38S. R.11E. W.M.  
KLAMATH COUNTY

38 11 21B

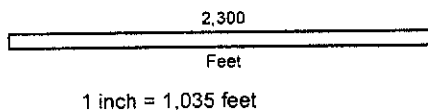
1/4 SEC. 21 T.38S. R.11E. W.M.  
KLAMATH COUNTY





**Klamath County**

- Vicinity -



Date Printed: 9-7-17

This map is for planning purposes only. This map has been prepared for internal use by Klamath County only. Accuracy and completeness is not guaranteed to any other agency, public or private.