



00221238201800050430030035

04/25/2018 09:40:56 AM

Fee: NO FEE

**BEFORE THE BOARD OF COUNTY COMMISSIONERS
FOR KLAMATH COUNTY, OREGON**

IN THE MATTER OF VACATING LOTS 19)
AND 20 OF COLLIER LAND SUBDIVISION)
(TRACT 1278), BUT NOT INCLUDING THE)
PORTION OF THE 30 FOOT ACCESS AND)
UTILITY EASEMENT ON LOT 20,)
SITUATED IN SECTION 8AC, TOWNSHIP)
39 SOUTH, RANGE 10 EAST OF THE)
WILLAMETTE MERIDIAN, KLAMATH)
COUNTY, OREGON.)

FINAL ORDERNo. OR 2018-097

WHEREAS in accordance with the provisions of ORS 368.351, a petition containing the acknowledged signatures of 100% of the owners of the property (Barry H. Tiemann & Phyllis F. Jones) identified in Exhibit "A" attached where the lots to be vacated have been submitted and accepted by the Board of County Commissioners; and

WHEREAS the Board of County Commissioners directed the Planning Director to submit a report regarding the petition to vacate the two lots; and

WHEREAS the Planning Director filed with the Board of County Commissioners a report regarding the petition for vacating the lots which was accepted; and

WHEREAS after duly considering the report and other documentation presented, the Board of County Commissioners finds that vacating the lots within the property identified in Exhibit "A," but not including the portion of the 30 foot access and utility easement on Lot 20, is acceptable and should be granted;

NOW, THEREFORE IT IS ORDERED that the petition is hereby granted and the identified lots are vacated.

DONE AND DATED THIS 24th day of April, 2018


Chair
Commissioner
Commissioner

EXHIBIT "A"

Vacate Lots 19 and 20 of Collier Lane Subdivision (TRACT 1278) located in Klamath County, Oregon, but not including the portion of the 30 foot access and utility easement located on Lot 20.

TRACT 1278 - COLLIER LANE

IN THE NE 1/4 AND SE 1/4
SECTION 8, T.39S., R.10E., W.M.
KLAMATH COUNTY,

MONUMENT FOUND AS NOTED
SET 5/8" X 30" REBAR WITH PLASTIC CAP
MARKED "ADJUNKS CONSULT ENGRS INC"

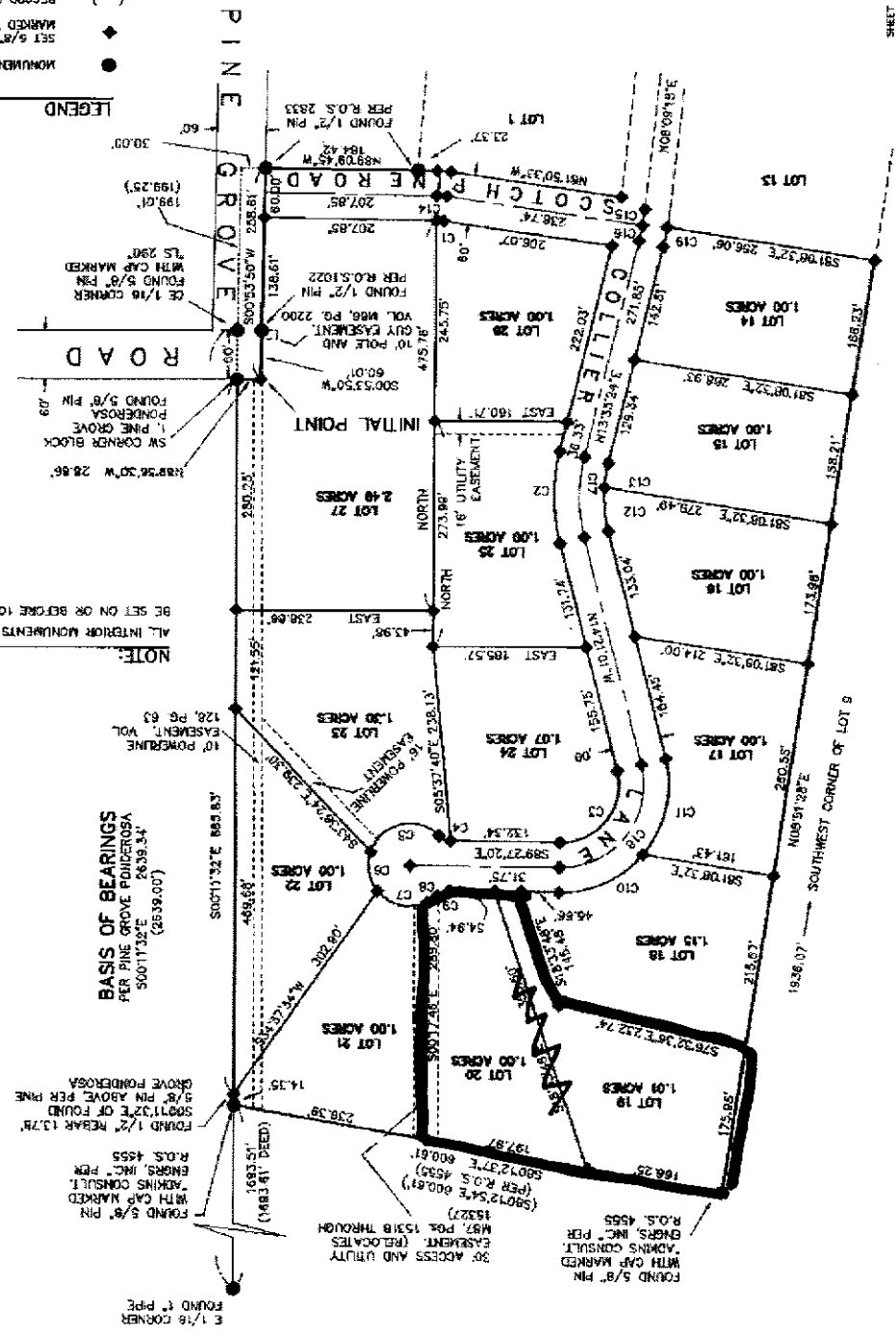
LEGEND

NOTE:
ALL INTERIOR MONUMENTS WILL
BE SET ON OR BEFORE 10/31/83

SCALE: 1" = 100'



REGISTERED
PROFESSIONAL
LAND SURVEYOR
JAMES E. HARRIS
DECEMBER 18, 1978
EXPIRES 12/18/84
JAMES E. HARRIS
JAMES E. HARRIS



CURVE	BEARING	CHORD	LENGTH	RADIUS
C1	S85.30°09'E	0.71812	70.00	8.94
C2	N00°22'48"W	2.75825	112.18	111.05
C3	N00°22'48"W	104.5340	110.89	110.89
C4	N76°36'43"E	44.2455	15.12	15.12
C5	N76°36'43"E	116.4140	65.12	101.84
C6	N76°36'43"E	116.4140	65.12	101.84
C7	N76°36'43"E	116.4140	65.12	101.84
C8	N76°36'43"E	116.4140	65.12	101.84
C9	N76°36'43"E	116.4140	65.12	101.84
C10	N76°36'43"E	116.4140	65.12	101.84
C11	N76°36'43"E	116.4140	65.12	101.84
C12	N76°36'43"E	116.4140	65.12	101.84
C13	N76°36'43"E	116.4140	65.12	101.84
C14	N76°36'43"E	116.4140	65.12	101.84
C15	N76°36'43"E	116.4140	65.12	101.84
C16	N76°36'43"E	116.4140	65.12	101.84
C17	N76°36'43"E	116.4140	65.12	101.84
C18	N76°36'43"E	116.4140	65.12	101.84
C19	N76°36'43"E	116.4140	65.12	101.84
C20	N76°36'43"E	116.4140	65.12	101.84
C21	N76°36'43"E	116.4140	65.12	101.84
C22	N76°36'43"E	116.4140	65.12	101.84
C23	N76°36'43"E	116.4140	65.12	101.84
C24	N76°36'43"E	116.4140	65.12	101.84
C25	N76°36'43"E	116.4140	65.12	101.84
C26	N76°36'43"E	116.4140	65.12	101.84
C27	N76°36'43"E	116.4140	65.12	101.84