



**BEFORE THE BOARD OF COUNTY COMMISSIONERS  
FOR KLAMATH COUNTY, OREGON**

IN THE MATTER OF VACATION OF LOTS )  
1, 2, 3 AND 21, BLOCK 7 OF LATAKOMIE )  
SHORES SITUATED IN SECTION 7CD, )  
TOWNSHIP 37 SOUTH, RANGE 7 EAST OF )  
THE WILLAMETTE MERIDIAN, KLAMATH )  
COUNTY, OREGON. )

**FINAL ORDER**

No. OR 2019-017

**WHEREAS** in accordance with the provisions of ORS 368.351, a petition containing the acknowledged signatures of 100% of the owners of the property (Robert and Clementina Evans, Evans Family Trust) identified in Exhibit "A" attached where the lots to be vacated have been submitted and accepted by the Board of County Commissioners; and

**WHEREAS** the Board of County Commissioners directed the Planning Director to submit a report regarding the petition for vacating the four lots; and

**WHEREAS** the Planning Director filed with the Board of County Commissioners a report regarding the petition for vacating the lots which was accepted; and

**WHEREAS** after duly considering the report and other documentation presented, the Board of County Commissioners finds that vacating the lots within the property identified in Exhibit "A" is acceptable and should be granted;

**NOW, THEREFORE IT IS ORDERED** that the petition is hereby granted and the identified lots are vacated.

**DONE AND DATED THIS** 25<sup>th</sup> day of September, 2018

Chair

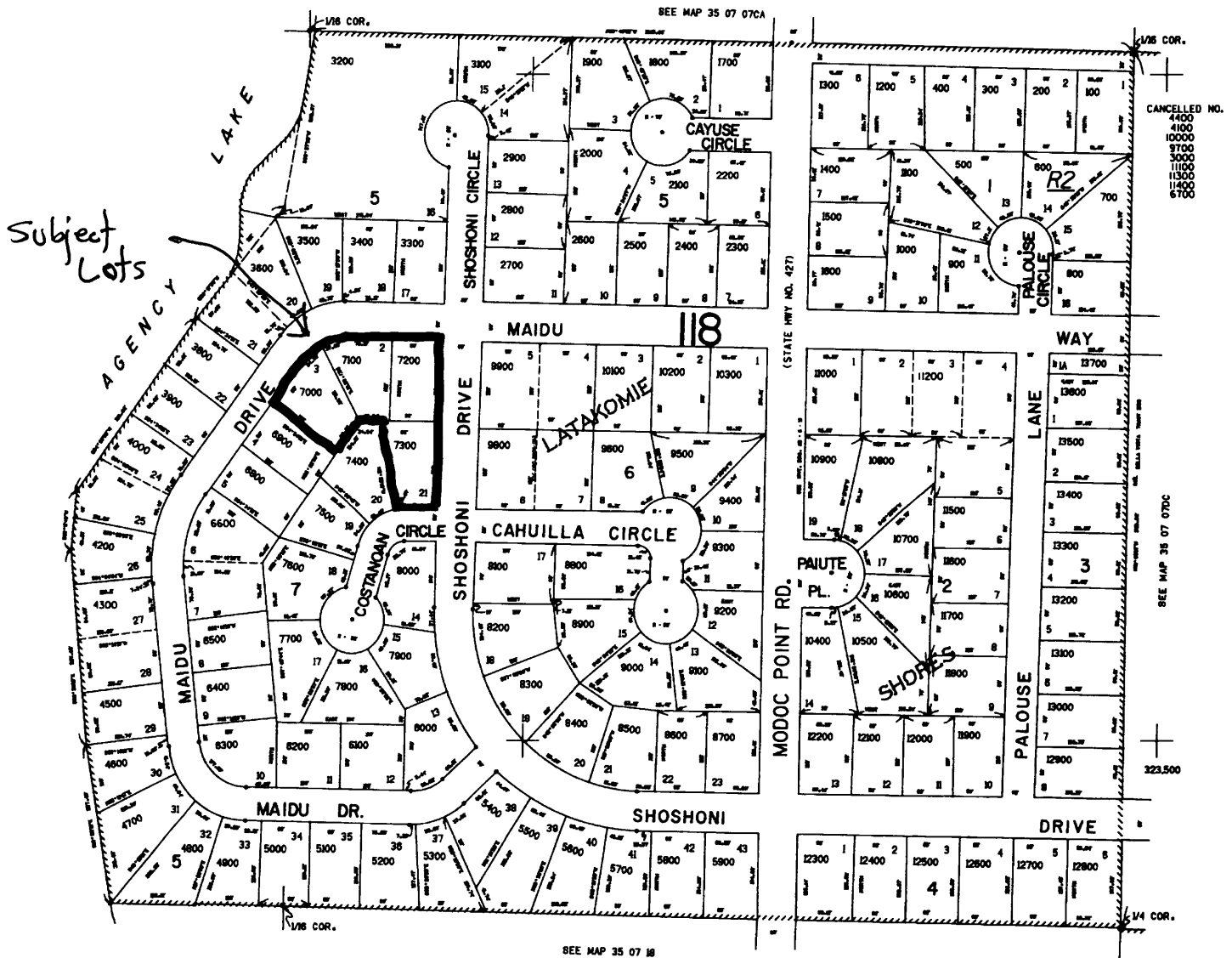
Commissioner

Commissioner

**EXHIBIT "A"**

Vacation of Lots 1, 2, 3 and 21, Block 7 or Latakomie Shores located in Klamath County, Oregon.

35 07 07CD



35 07 07CD