

2018-014137

Klamath County, Oregon



00232271201800141370020022

11/21/2018 09:35:48 AM

Fee: NO FEE

**BEFORE THE BOARD OF COUNTY COMMISSIONERS
FOR KLAMATH COUNTY, OREGON**

IN THE MATTER OF VACATING LOTS 20,)
21, 23, AND 24 OF FOX HOLLOW)
SUBDIVISION, BUT NOT INCLUDING THE)
10 FOOT UTILITY AND ACCESS)
EASEMENT ON THE BACK OF THE LOTS,)
SITUATED IN SECTION 14CC, TOWNSHIP)
36 SOUTH, RANGE 6 EAST OF THE)
WILLAMETTE MERIDIAN, KLAMATH)
COUNTY, OREGON.

FINAL ORDER

No. 2019-023

WHEREAS in accordance with the provisions of ORS 368.351, a petition containing the acknowledged signatures of 100% of the owners of the property (Ronald Briery) identified in Exhibit "A" attached where the lots to be vacated have been submitted and accepted by the Board of County Commissioners; and

WHEREAS the Board of County Commissioners directed the Planning Director to submit a report regarding the petition to vacate the four lots; and

WHEREAS the Planning Director filed with the Board of County Commissioners a report regarding the petition for vacating the lots which was accepted; and

WHEREAS after duly considering the report and other documentation presented, the Board of County Commissioners finds that vacating the lots within the property identified in Exhibit "A," but not including the 10 foot easement on the back of the lots, is acceptable and should be granted;

NOW, THEREFORE IT IS ORDERED that the petition is hereby granted and the identified lots are vacated.

DONE AND DATED THIS 20th day of November, 2018

0
Chair

Commissioner

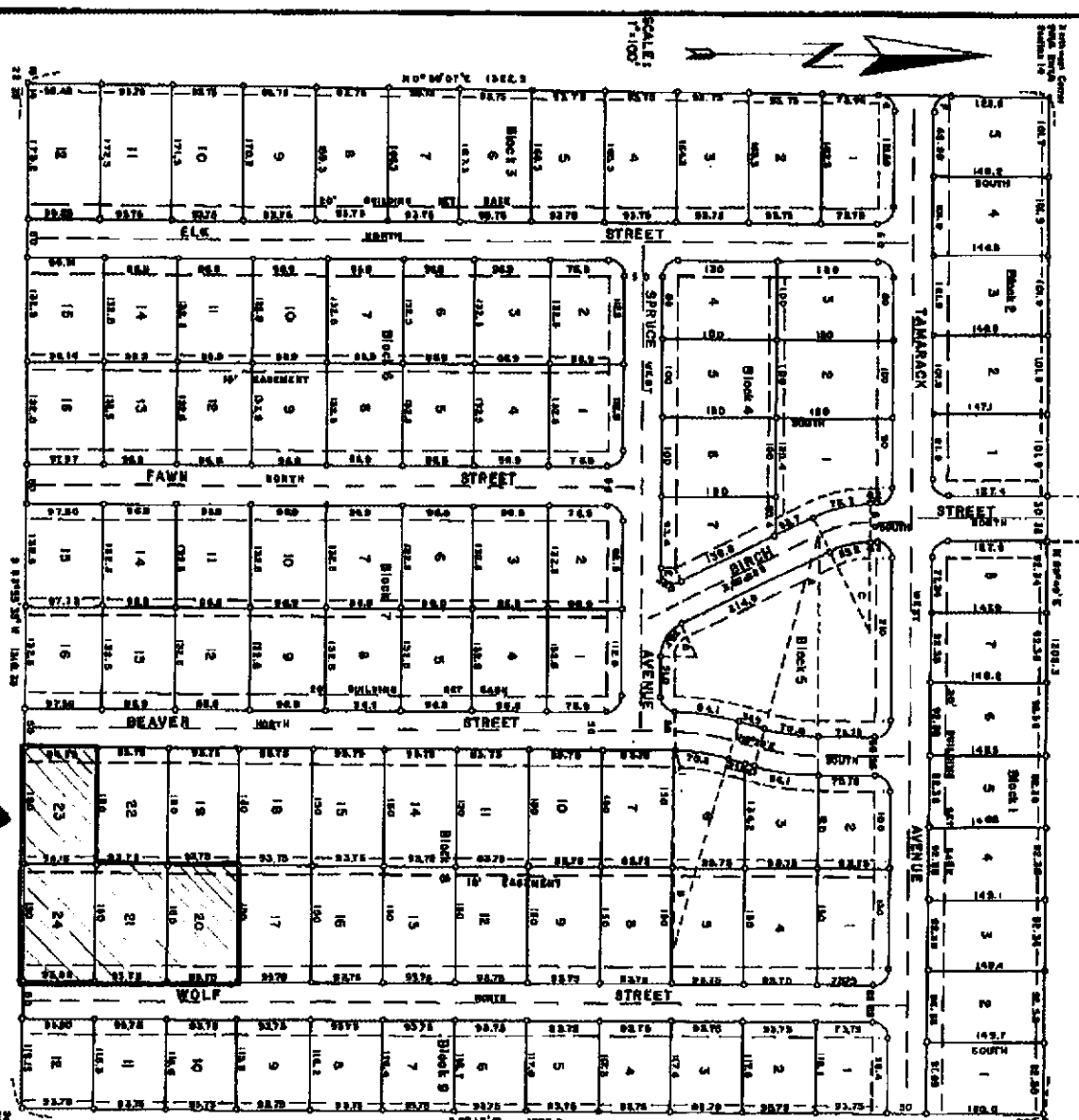
Commissioner

FOX HOLLOW

SITUATED IN THE SW 1/4 SW 1/4 SECTION 14, T36S, R6EWM, Klamath County, Oregon.

18-310

Sheet No. 1 of 2



STATE OF OREGON
COUNTY OF KLAMATH

SURVEYORS' CERTIFICATE

33

I, Chas. T. Darter, being duly sworn, depose and say that I surveyed, subdivided and plotted "FOX HOLLOW", situated in the SW 1/4 of the SW 1/4 of Section 14, T36S, R6EWM, Klamath County, Oregon, and, more particularly described as follows: Beginning at the initial corner of the SW 1/4 SW 1/4 of Sec. 14, T36S, R6EWM, which point is also the initial point of "Odessa Summer Home Site", thence S 0° 10' W, along the East line of said SW 1/4 SW 1/4, 1325.0 feet to the Southeast corner of said SW 1/4 SW 1/4, thence S 89° 55' 36" W, along the South line of said SW 1/4 SW 1/4, 1268.33 feet to the Iron monument marking the corner common to Sections 14, 15, 22 and 23, T36S, R6EWM, thence N 0° 38' 07" E, along the West line of said SW 1/4 SW 1/4, 1308.5 feet to the Northwest corner of said SW 1/4 SW 1/4, thence N 85° 45' E, along the North line of said SW 1/4 SW 1/4, 1308.5 feet to the point of beginning. I made such survey and plot by order of and under the direction of G.O. Erickson and Adelle Erickson, husband and wife, Robert E. Vachon and Norma M. Vachon, husband and wife, and George P. Davis and Geneva G. Davis, husband and wife, the owners thereof, that the size of all lots and the width of all streets are as shown on the attached plan and that all lot corners are marked with iron pins and wooden witness stakes.

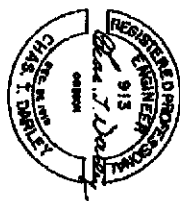
Chas. T. Darter

Subscribed and sworn to before me this 15th day of August, 1932

Notary Public for Oregon
My Commission expires 12/31/33



CERTIFICATE		CUMULATIVE		TAXES	
NO.	DATE	NO.	DATE	NO.	DATE
1	1932	1	1932	1	1932
2	1932	2	1932	2	1932
3	1932	3	1932	3	1932
4	1932	4	1932	4	1932
5	1932	5	1932	5	1932
6	1932	6	1932	6	1932
7	1932	7	1932	7	1932
8	1932	8	1932	8	1932
9	1932	9	1932	9	1932
10	1932	10	1932	10	1932
11	1932	11	1932	11	1932
12	1932	12	1932	12	1932
13	1932	13	1932	13	1932
14	1932	14	1932	14	1932
15	1932	15	1932	15	1932
16	1932	16	1932	16	1932
17	1932	17	1932	17	1932
18	1932	18	1932	18	1932
19	1932	19	1932	19	1932
20	1932	20	1932	20	1932
21	1932	21	1932	21	1932
22	1932	22	1932	22	1932
23	1932	23	1932	23	1932
24	1932	24	1932	24	1932
25	1932	25	1932	25	1932
26	1932	26	1932	26	1932
27	1932	27	1932	27	1932
28	1932	28	1932	28	1932
29	1932	29	1932	29	1932
30	1932	30	1932	30	1932
31	1932	31	1932	31	1932
32	1932	32	1932	32	1932
33	1932	33	1932	33	1932
34	1932	34	1932	34	1932
35	1932	35	1932	35	1932
36	1932	36	1932	36	1932
37	1932	37	1932	37	1932
38	1932	38	1932	38	1932
39	1932	39	1932	39	1932
40	1932	40	1932	40	1932
41	1932	41	1932	41	1932
42	1932	42	1932	42	1932
43	1932	43	1932	43	1932
44	1932	44	1932	44	1932
45	1932	45	1932	45	1932
46	1932	46	1932	46	1932
47	1932	47	1932	47	1932
48	1932	48	1932	48	1932
49	1932	49	1932	49	1932
50	1932	50	1932	50	1932
51	1932	51	1932	51	1932
52	1932	52	1932	52	1932
53	1932	53	1932	53	1932
54	1932	54	1932	54	1932
55	1932	55	1932	55	1932
56	1932	56	1932	56	1932
57	1932	57	1932	57	1932
58	1932	58	1932	58	1932
59	1932	59	1932	59	1932
60	1932	60	1932	60	1932
61	1932	61	1932	61	1932
62	1932	62	1932	62	1932
63	1932	63	1932	63	1932
64	1932	64	1932	64	1932
65	1932	65	1932	65	1932
66	1932	66	1932	66	1932
67	1932	67	1932	67	1932
68	1932	68	1932	68	1932
69	1932	69	1932	69	1932
70	1932	70	1932	70	1932
71	1932	71	1932	71	1932
72	1932	72	1932	72	1932
73	1932	73	1932	73	1932
74	1932	74	1932	74	1932
75	1932	75	1932	75	1932
76	1932	76	1932	76	1932
77	1932	77	1932	77	1932
78	1932	78	1932	78	1932
79	1932	79	1932	79	1932
80	1932	80	1932	80	1932
81	1932	81	1932	81	1932
82	1932	82	1932	82	1932
83	1932	83	1932	83	1932
84	1932	84	1932	84	1932
85	1932	85	1932	85	1932
86	1932	86	1932	86	1932
87	1932	87	1932	87	1932
88	1932	88	1932	88	1932
89	1932	89	1932	89	1932
90	1932	90	1932	90	1932
91	1932	91	1932	91	1932
92	1932	92	1932	92	1932
93	1932	93	1932	93	1932
94	1932	94	1932	94	1932
95	1932	95	1932	95	1932
96	1932	96	1932	96	1932
97	1932	97	1932	97	1932
98	1932	98	1932	98	1932
99	1932	99	1932	99	1932
100	1932	100	1932	100	1932



Subject
Property

LV 13-18

A