

2019-005384

Klamath County, Oregon



00240500201900053840030033

05/14/2019 03:25:49 PM

Fee: NO FEE

BEFORE THE BOARD OF COUNTY COMMISSIONERS
FOR KLAMATH COUNTY, OREGON

IN THE MATTER OF VACATING LOTS 4)
AND 5, BLOCK 10 OF THE FIRST)
ADDITION OF GREEN ACRES (TRACT)
1193) SITUATED IN SECTION 1C,)
TOWNSHIP 39 SOUTH, RANGE 8 EAST OF)
THE WILLAMETTE MERIDIAN, KLAMATH)
COUNTY, OREGON.)

FINAL ORDER

No. OR 2019-064

Return to Commissioner's Journal

WHEREAS in accordance with the provisions of ORS 368.351, a petition containing the acknowledged signatures of 100% of the owners of the property (Kelly and Mary Slater) identified in Exhibit "A" attached where the lots to be vacated have been submitted and accepted by the Board of County Commissioners; and

WHEREAS the Board of County Commissioners directed the Planning Director to submit a report regarding the petition to vacate the two lots; and

WHEREAS the Planning Director filed with the Board of County Commissioners a report regarding the petition for vacating the lots which was accepted; and

WHEREAS after duly considering the report and other documentation presented, the Board of County Commissioners finds that vacating the two lots identified in Exhibit "A" is acceptable and should be granted;

NOW, THEREFORE IT IS ORDERED that the petition is hereby granted and the identified lots are vacated.

DONE AND DATED THIS 14th day of May, 2019

Chair

Out of Office Today

Commissioner

Commissioner

EXHIBIT "A"

Vacate Lots 4 and 5, Block 10, of the First Addition to Green Acres (Tract 1193) in Klamath County, Oregon.

FIRST ADDITION TO GREEN ACRES

TRACT NO. 1193

SITUATED IN THE
SW 1/4 SW 1/4, SECTION 1, T 39 S., R 8 E., W.M.,
KLAMATH COUNTY, OREGON

SURVEYOR'S CERTIFICATE

APPROVALS
Approved by the Klamath County Planning Director 10/10/78
By James R. Brubaker
Planning Director

Approved by the Klamath County Board of Commissioners 10/10/78
By James R. Brubaker
Planning Director

Approved by the Klamath County Board of Commissioners 10/10/78
By James R. Brubaker
Planning Director

Approved by the Klamath County Board of Commissioners 10/10/78
By James R. Brubaker
Planning Director

Approved by the Klamath County Board of Commissioners 10/10/78
By James R. Brubaker
Planning Director

Approved by the Klamath County Board of Commissioners 10/10/78
By James R. Brubaker
Planning Director

Approved by the Klamath County Board of Commissioners 10/10/78
By James R. Brubaker
Planning Director

Approved by the Klamath County Board of Commissioners 10/10/78
By James R. Brubaker
Planning Director

Approved by the Klamath County Board of Commissioners 10/10/78
By James R. Brubaker
Planning Director

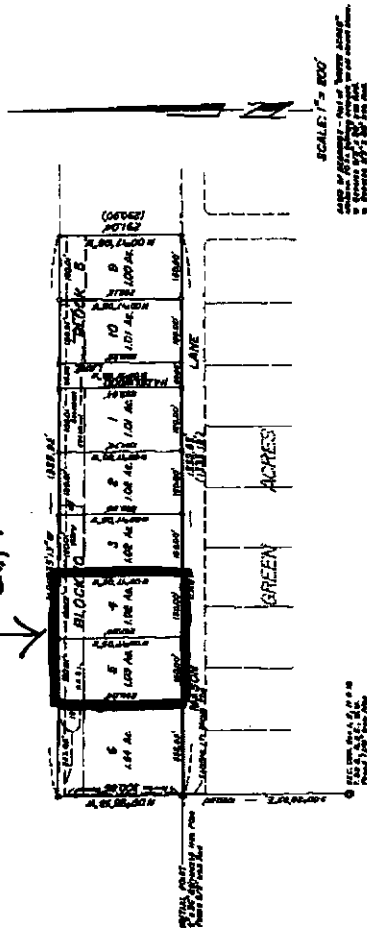
Approved by the Klamath County Board of Commissioners 10/10/78
By James R. Brubaker
Planning Director

Approved by the Klamath County Board of Commissioners 10/10/78
By James R. Brubaker
Planning Director

Approved by the Klamath County Board of Commissioners 10/10/78
By James R. Brubaker
Planning Director

Approved by the Klamath County Board of Commissioners 10/10/78
By James R. Brubaker
Planning Director

subject
lots



I hereby certify that all of the above lots and all of the above tracts are in compliance with the requirements of the Klamath County Planning Department and that the same are in compliance with the requirements of the Klamath County Board of Commissioners.

James R. Brubaker
County Engineer

James R. Brubaker
County Engineer

No warranty is made by the Klamath County Planning Department as to the accuracy of the survey or the validity of the title.

James R. Brubaker
County Engineer

James R. Brubaker
County Engineer

STATE OF OREGON)
COUNTY OF KLAMATH) ss.

I, James R. Brubaker, being duly sworn, depose and say that I am the Surveyor of the Klamath County, Oregon, and that I have surveyed the above described tract and that the same is in compliance with the requirements of the Klamath County Planning Department and that the same are in compliance with the requirements of the Klamath County Board of Commissioners.

James R. Brubaker
Surveyor

Subscribed and sworn to at the City of Klamath, Oregon, this 10th day of October, 1978.

James R. Brubaker
Notary Public for Oregon

DEDICATION

STATE OF OREGON)
COUNTY OF KLAMATH) ss.
We, A.R. Brubaker and Ethel Brubaker, husband and wife, being the owners of the above described tract, do hereby dedicate the same to the public of the County of Klamath, Oregon, for the use and benefit of the same.

ACKNOWLEDGMENT

STATE OF OREGON)
COUNTY OF KLAMATH) ss.
I, James R. Brubaker, being duly sworn, depose and say that I am the Surveyor of the Klamath County, Oregon, and that I have surveyed the above described tract and that the same is in compliance with the requirements of the Klamath County Planning Department and that the same are in compliance with the requirements of the Klamath County Board of Commissioners.

James R. Brubaker
Notary Public for Oregon