



00243283201900076270020023

07/08/2019 10:30:59 AM

Fee: NO FEE

**BEFORE THE BOARD OF COUNTY COMMISSIONERS  
FOR KLAMATH COUNTY, OREGON**

IN THE MATTER OF VACATING LOTS 22 )  
AND 23, BLOCK 11 OF SPRAGUE RIVER )  
VALLEY ACRES SITUATED IN SECTION )  
1B, TOWNSHIP 36 SOUTH, RANGE 12 )  
EAST OF THE WILLAMETTE MERIDIAN, )  
KLAMATH COUNTY, OREGON. )

FINAL ORDER

No. OR 2019-077

**WHEREAS** in accordance with the provisions of ORS 368.351, a petition containing the acknowledged signatures of 100% of the owners of the property (Lee and Cheri Clark) identified in Exhibit "A" attached where the lots to be vacated have been submitted and accepted by the Board of County Commissioners; and

**WHEREAS** the Board of County Commissioners directed the Planning Director to submit a report regarding the petition to vacate the two lots and the 16 foot drainage and future utility easement along the common lot line between lots 22 and 23; and

**WHEREAS** the Planning Director filed with the Board of County Commissioners a report regarding the petition for vacating the lots and easement which was accepted; and

**WHEREAS** after duly considering the report and other documentation presented, the Board of County Commissioners finds that vacating the two lots identified in Exhibit "A" is acceptable and should be granted;

**NOW, THEREFORE IT IS ORDERED** that the petition is hereby granted and the identified lots and easement are vacated.

DONE AND DATED THIS 25<sup>th</sup> day of June, 2019

[Signature]  
Chair

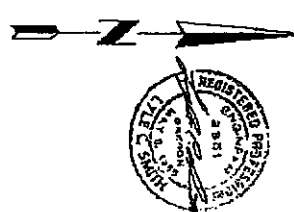
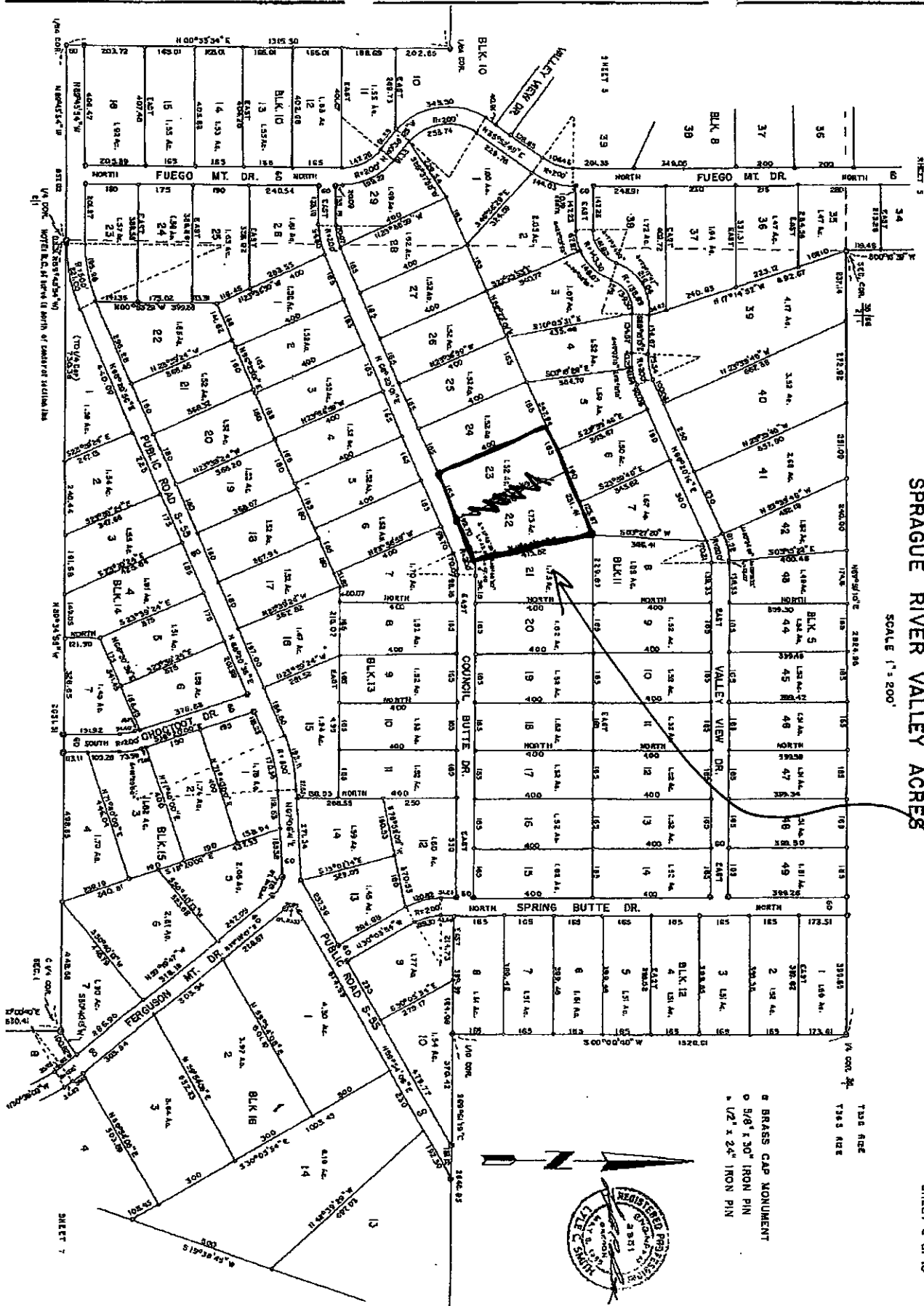
[Signature]  
Commissioner

[Signature]  
Commissioner

# SPRAGUE RIVER VALLEY ACRES

SCALE 1" = 200'

Subject  
Property



- BRASS CAP MONUMENT
- 5/8" x 30" IRON PIN
- 1/2" x 24" IRON PIN