



00256070202000031560020023

03/13/2020 11:49:53 AM

Fee: NO FEE

**BEFORE THE BOARD OF COUNTY COMMISSIONERS  
FOR KLAMATH COUNTY, OREGON**

IN THE MATTER OF VACATING LOTS 732, )  
AND VACATED LOTS 731 AND 730, )  
SITUATED IN SECTION 15BA, TOWNSHIP )  
38 SOUTH, RANGE 08 EAST OF THE )  
WILLAMETTE MERIDIAN, KLAMATH )  
COUNTY, OREGON. )

**FINAL ORDER**No. 2020-077

**WHEREAS** in accordance with the provisions of ORS 368.351, a petition containing the acknowledged signatures of 100% of the owners of the property (Sean and Anu Campbell) identified in Exhibit "A" attached where the lots to be vacated have been submitted and accepted by the Board of County Commissioners; and

**WHEREAS** the Board of County Commissioners directed the Planning Director to submit a report regarding the petition to vacate the lot 732 and the vacated lots 731 and 730, and

**WHEREAS** the Planning Director filed with the Board of County Commissioners a report regarding the petition for vacating the lots which was accepted; and

**WHEREAS** after duly considering the report and other documentation presented, the Board of County Commissioners finds that vacating lot 732 and the vacated lots 731 and 730 identified in Exhibit "A" is acceptable and should be granted;

**NOW, THEREFORE IT IS ORDERED** that the petition is hereby granted and the identified lots are vacated.

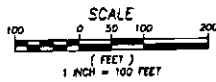
**DONE AND DATED THIS** 10 day of March, 2020

Chair

Commissioner

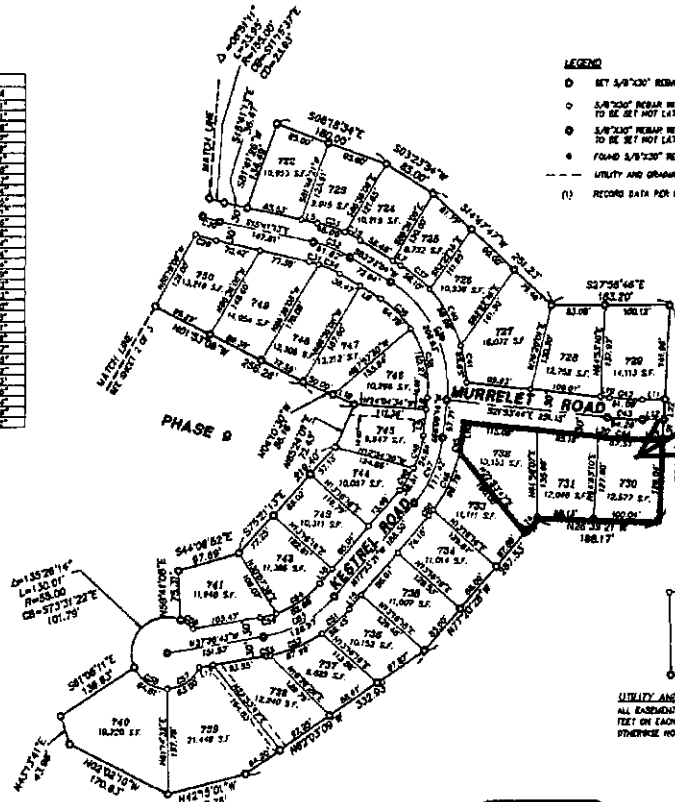
Commissioner

LOCATED IN THE SOUTHWEST 1/4 OF SECTION 10  
AND THE NORTHWEST 1/4 OF SECTION 16,  
TOWNSHIP 38 SOUTH, RANGE 8 EAST, WILLAMETTE MERIDIAN  
KLAMATH COUNTY, OREGON  
TRACT NO. 1971  
JULY 2000



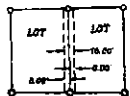
CURVE	RADIUS	LENGTH	CHORD	BEARING	DELTA
C1	174.00	13.74	13.11	S113.03°E	263.11°
C2	174.00	13.74	13.11	S113.03°E	263.11°
C3	174.00	13.74	13.11	S113.03°E	263.11°
C4	174.00	13.74	13.11	S113.03°E	263.11°
C5	174.00	13.74	13.11	S113.03°E	263.11°
C6	174.00	13.74	13.11	S113.03°E	263.11°
C7	174.00	13.74	13.11	S113.03°E	263.11°
C8	174.00	13.74	13.11	S113.03°E	263.11°
C9	174.00	13.74	13.11	S113.03°E	263.11°
C10	174.00	13.74	13.11	S113.03°E	263.11°
C11	174.00	13.74	13.11	S113.03°E	263.11°
C12	174.00	13.74	13.11	S113.03°E	263.11°
C13	174.00	13.74	13.11	S113.03°E	263.11°
C14	174.00	13.74	13.11	S113.03°E	263.11°
C15	174.00	13.74	13.11	S113.03°E	263.11°
C16	174.00	13.74	13.11	S113.03°E	263.11°
C17	174.00	13.74	13.11	S113.03°E	263.11°
C18	174.00	13.74	13.11	S113.03°E	263.11°
C19	174.00	13.74	13.11	S113.03°E	263.11°
C20	174.00	13.74	13.11	S113.03°E	263.11°
C21	174.00	13.74	13.11	S113.03°E	263.11°
C22	174.00	13.74	13.11	S113.03°E	263.11°
C23	174.00	13.74	13.11	S113.03°E	263.11°
C24	174.00	13.74	13.11	S113.03°E	263.11°
C25	174.00	13.74	13.11	S113.03°E	263.11°
C26	174.00	13.74	13.11	S113.03°E	263.11°
C27	174.00	13.74	13.11	S113.03°E	263.11°
C28	174.00	13.74	13.11	S113.03°E	263.11°
C29	174.00	13.74	13.11	S113.03°E	263.11°
C30	174.00	13.74	13.11	S113.03°E	263.11°

LINE	BEARING	LENGTH
L1	N104°13'W	25.80
L2	S02°22'W	38.47
L3	S02°22'W	14.88
L4	S88°08'W	17.80
L5	S88°08'W	25.80
L6	S88°08'W	27.71
L7	S28°08'W	54.80
L8	S28°08'W	33.23
L9	S28°08'W	25.13
L10	S28°08'W	25.13
L11	S28°08'W	25.13
L12	S28°08'W	25.13
L13	S28°08'W	25.13
L14	S28°08'W	25.13
L15	S28°08'W	25.13
L16	S28°08'W	25.13
L17	S28°08'W	25.13
L18	S28°08'W	25.13
L19	S28°08'W	25.13
L20	S28°08'W	25.13
L21	S28°08'W	25.13
L22	S28°08'W	25.13
L23	S28°08'W	25.13
L24	S28°08'W	25.13
L25	S28°08'W	25.13



- LEGEND
- SET 5/8"X20" REBAR WITH YELLOW PLASTIC CAP MARKED "WM PACIFIC"
  - 5/8"X20" REBAR WITH YELLOW PLASTIC CAP MARKED "WM PACIFIC", TO BE SET NOT LATER THAN OCTOBER 1, 2001.
  - 5/8"X20" REBAR WITH ALUMINUM CAP MARKED "WM PACIFIC", TO BE SET NOT LATER THAN OCTOBER 1, 2001.
  - FOUND 5/8"X20" REBAR WITH YELLOW PLASTIC CAP MARKED "WM PACIFIC"
  - UTILITY AND DRAINAGE EASEMENT
  - (1) RECORD DATA FOR PLANNING & RESORT, PHASE 3

Subject  
Property of LV  
2-20. Lots 703  
and 731 were  
vacated via  
BOCC Order  
2018-051



UTILITY AND DRAINAGE EASEMENTS TYPICAL  
ALL EASEMENTS ARE 10.00 FEET WIDE, 8.00  
FEET ON EACH SIDE OF THE LOT LINE, UNLESS  
OTHERWISE NOTED.

REGISTERED  
PROFESSIONAL  
LAND SURVEYOR  
*Keith L. Alford*

RIDGE VIEW HOMESITES - PHASE FIVE  
1004 Main St.  
Klamath Falls, Oregon 97601-5819