



BEFORE THE BOARD OF COUNTY COMMISSIONERS  
FOR KLAMATH COUNTY, OREGON

IN THE MATTER OF VACATING LOTS 5 )  
AND 6 OF THE KLAMATH FALLS FOREST )  
ESTATES HIGHWAY 66 UNIT PLAT #1, )  
SITUATED IN SECTION 20D0, TOWNSHIP )  
37 SOUTH, RANGE 11 EAST OF THE )  
WILLAMETTE MERIDIAN, KLAMATH )  
COUNTY, OREGON. )

FINAL ORDER  
No. OR 2021-089

*Revised at the request of the Planning Department  
to correct the legal description in 2021-010272*

WHEREAS in accordance with the provisions of ORS 368.351, a petition containing the acknowledged signatures of 100% of the owners of the property (Cheyanne Gehrke and Levi Garza) identified in Exhibit "A" attached where the lots to be vacated have been submitted and accepted by the Board of County Commissioners; and

WHEREAS the Board of County Commissioners directed the Planning Director to submit a report regarding the petition to vacate the two lots, and

WHEREAS the Planning Director filed with the Board of County Commissioners a report regarding the petition for vacating the lots which was accepted; and

WHEREAS after duly considering the report and other documentation presented, the Board of County Commissioners finds that vacating the two lots identified in Exhibit "A" is acceptable and should be granted;

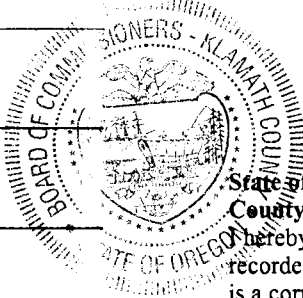
NOW, THEREFORE IT IS ORDERED that the petition is hereby granted and the identified lots are vacated.

DONE AND DATED THIS 22nd day of June, 2021

Chair

Commissioner

Commissioner

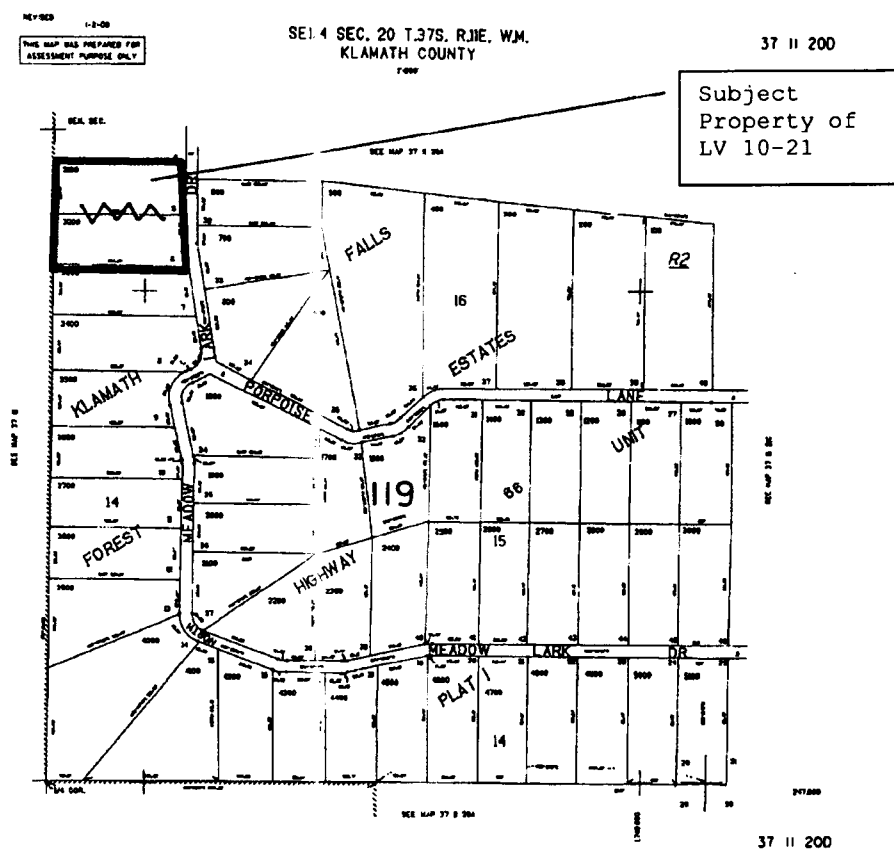


State of Oregon  
County of Klamath  
I hereby certify that instrument #2021-010272,  
recorded on 7/1/2021, consisting of 2 page(s),  
is a correct copy as it appears on record at the  
Klamath County Clerk's office.  
Rochelle Long, Klamath County Clerk  
Date: March 28th, 2022  
  
Lisa Kessler

Return to Commissioner's Journal

## EXHIBIT "A"

Lots 5 and 6, Klamath Falls Forest Estates Hwy 66 Plat #1



2021-010272

Klamath County, Oregon



00283105202100102720020021

07/01/2021 09:39:27 AM

Fee: NO FEE

BEFORE THE BOARD OF COUNTY COMMISSIONERS  
FOR KLAMATH COUNTY, OREGON

Block 1A

IN THE MATTER OF VACATING LOTS 5 )  
AND 6 OF THE KLAMATH FALLS FOREST )  
ESTATES HIGHWAY 66 UNIT PLAT #1, )  
SITUATED IN SECTION 20D0, TOWNSHIP )  
37 SOUTH, RANGE 11 EAST OF THE )  
WILLAMETTE MERIDIAN, KLAMATH )  
COUNTY, OREGON. )

FINAL ORDER

No. OR 2021-089

Return to Commissioner's Journal

WHEREAS in accordance with the provisions of ORS 368.351, a petition containing the acknowledged signatures of 100% of the owners of the property (Cheyanne Gehrke and Levi Garza) identified in Exhibit "A" attached where the lots to be vacated have been submitted and accepted by the Board of County Commissioners; and

WHEREAS the Board of County Commissioners directed the Planning Director to submit a report regarding the petition to vacate the two lots, and

WHEREAS the Planning Director filed with the Board of County Commissioners a report regarding the petition for vacating the lots which was accepted; and

WHEREAS after duly considering the report and other documentation presented, the Board of County Commissioners finds that vacating the two lots identified in Exhibit "A" is acceptable and should be granted;

NOW, THEREFORE IT IS ORDERED that the petition is hereby granted and the identified lots are vacated.

DONE AND DATED THIS 22nd day of June, 2021

Chair

Commissioner

Commissioner

**Lots 5 and 6, Klamath Falls Forest Estates Hwy 66 Plat #1**

