

2024-000111

Klamath County, Oregon



01/04/2024 01:41:04 PM

Fee: NO FEE

**BEFORE THE BOARD OF COUNTY COMMISSIONERS  
FOR KLAMATH COUNTY, OREGON**

IN THE MATTER OF VACATING LOTS 3 )  
AND 4 BLOCK 11 OF OREGON SHORES )  
TRACT 1053 SITUATED IN SECTION 6DA, )  
TOWNSHIP 35 SOUTH, RANGE 07 EAST )  
OF THE WILLAMETTE MERIDIAN, )  
KLAMATH COUNTY, OREGON. )

**FINAL ORDER**

No. PR 2024-031

**WHEREAS** in accordance with the provisions of ORS 368.351, a petition containing the acknowledged signatures of 100% of the owners of the property (Ronald Raynes) identified in Exhibit "A" attached where the lots to be vacated have been submitted and accepted by the Board of County Commissioners; and

**WHEREAS** the Board of County Commissioners directed the Planning Director to submit a report regarding the petition to vacate the two lots, and

**WHEREAS** the Planning Director filed with the Board of County Commissioners a report regarding the petition for vacating the lots which was accepted; and

**WHEREAS** after duly considering the report and other documentation presented, the Board of County Commissioners finds that vacating the two lots identified in Exhibit "A" is acceptable and should be granted;

**NOW, THEREFORE IT IS ORDERED** that the petition is hereby granted and the identified lots are vacated.

DONE AND DATED THIS 2nd day of January, 2024

Chair

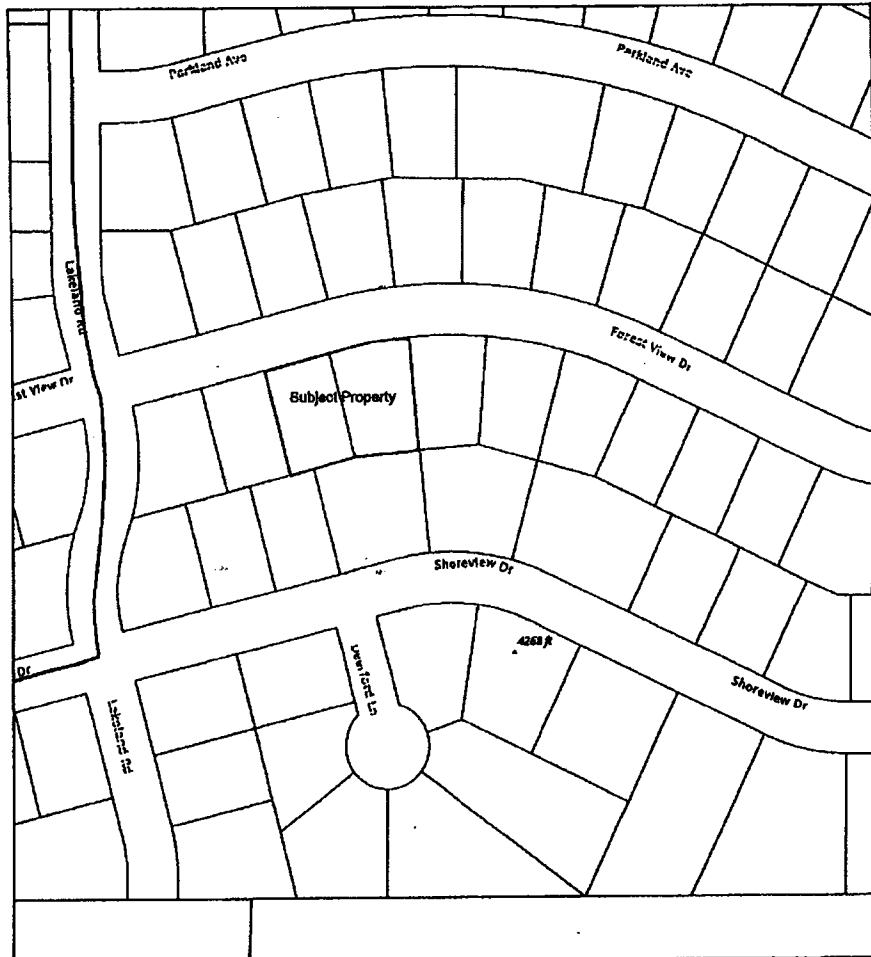
Commissioner

Commissioner

# EXHIBIT "A"

Lots 3 and 4 Block 11 of Oregon Shores Tract 1053

Vicinity Map: LV 6-23

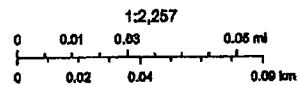


10/11/2023, 10:28:51 AM

Klamath County Taxlots
  Klamath County Roads

County Boundary
  Collector

Local



Sources: Esri, Airbus DS, USGS, NOAA, NGA, CGIAR, N. Robinson, NOAA,  
 NLS, O&M, GeoEye, GeoEye, GeoEye, GeoEye, GeoEye, GeoEye, GeoEye, GeoEye,  
 Intermap and the GIS user community, Esri Community Maps Contributors,  
 Oregon State Parks, State of Oregon GEO, © OpenStreetMap, Microsoft.

Klamath County GIS  
 Klamath County